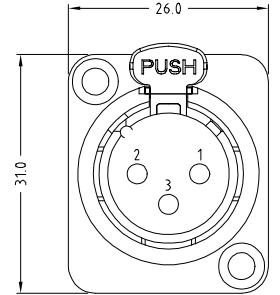
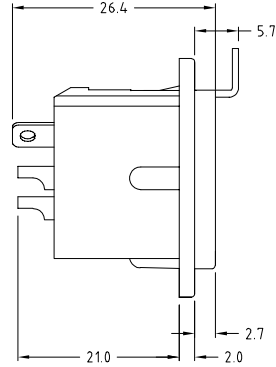
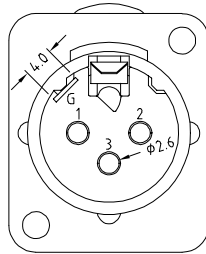
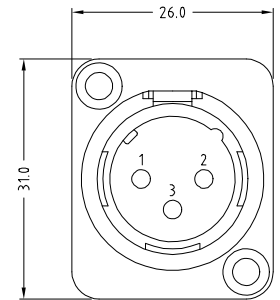
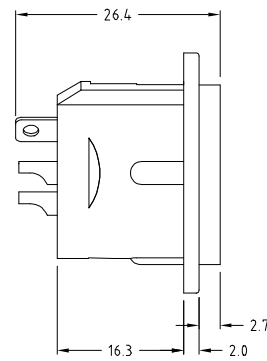
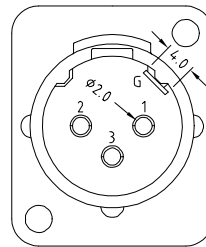


# CLIFF

## METAL 3 PIN XLR SOCKETS (FEEDTHROUGH STYLE)



**FC61900** - FEMALE XLR 3DCF/BM BLACK WITH LATCH  
**FC61900N** - FEMALE XLR 3DCF/NM NICKEL WITH LATCH



**FC61905** - MALE XLR 3DCM/BM BLACK  
**FC61905N** - MALE XLR 3DCM/NM NICKEL

### SPECIFICATION

- Contact Resistance:  $\leq 7m\Omega$
- Insulation Resistance:  $\geq 5000M\Omega$
- Withstand Voltage: 1400V
- Durability (Mating / Unmating):  $\geq 2000$  insertions
- Insertion and Extraction force: 10-80N

These metal 3 pin XLR's can be fitted into our 1U racks.

