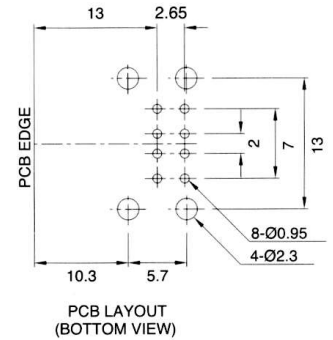
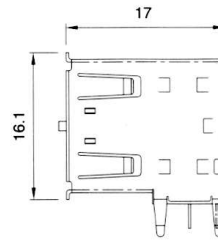
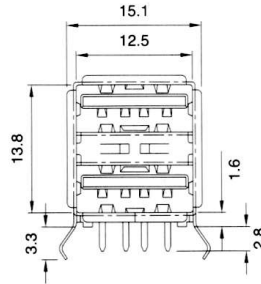
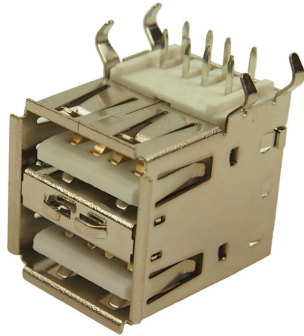


# CLIFF

## FEMALE DUAL STACKED RIGHT ANGLE USB CONNECTOR



### FEATURES

- Snap-in terminals facilitate wave soldering.
- Shielded for reduced EMI/RFI emissions.
- Increased PC board density.
- Gold plated contacts to ensure low contact resistance.
- Raised design provides easy insertion and withdrawal.

### SPECIFICATION

Voltage Rating:	30VAC (rms) Max.
Current Rating:	Signal application only, 1A Max. per contact
Contact Resistance:	25mΩ Max.
Temperature Rating:	+32°F to +104°F (0°C to +40°C)
Insertion Force:	3.5kg Max.
Withdrawal Force:	0.4kg Min.
Life:	1500 cycles

### MATERIALS

Body:	Moulded thermoplastic UL 94V-0
Shell:	Copper alloy, tin plated
Contacts:	Copper alloy, gold plating in mating area, tin plating on solder tails, all over nickel plating.

Part No. **FCK002A**