

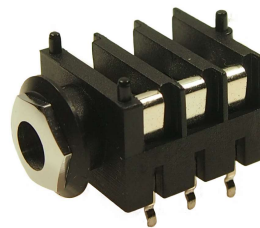
S4SA/SH/BBBX2 PC-C
2.9mm NOSE



S4SA/BNB/PCC
2.9mm NOSE



S4SB/BBB/PC-C
3.5mm NOSE



S4SC/BBB/PC-C
4.6mm NOSE

The **CLIFF**® S4S is a stacking version of the classic S4 model. It offers the increased packing density of the stacked Jack with the classic domed nut appearance.

This version is produced with 3 nose length options and a fine thread option on one version. S4S is available in Mono or Stereo with PC-C style contacts only.

Significant features include:

- High Packing density
- Brass / Phosphor bronze, Tinned contacts for Low Contact Resistance
- Snap in PCB Mounting
- Designed for behind the panel mounting
- Tough Nylon body
- Enhanced appearance

Cliff Electronic Components, Ltd.

76 Holmethorpe Avenue, Holmethorpe Ind. Est.

Redhill, Surrey RH1 2PF. England

Tel: +44 (0) 1737 771375

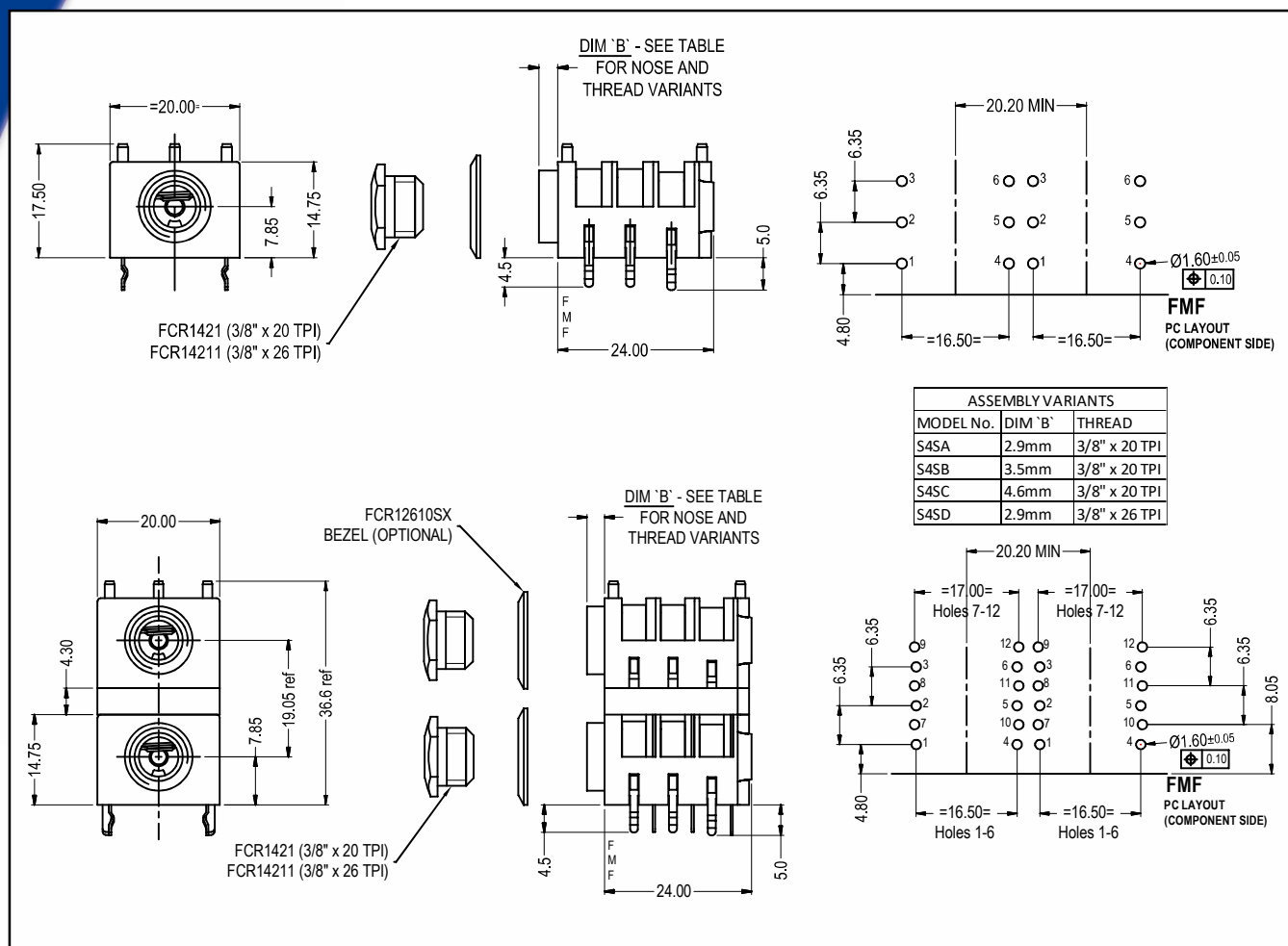
Fax: +44 (0) 1737 766012

Email: sales@cliffuk.co.uk

www.cliffuk.co.uk



1/4" S4S Jack Sockets



Specification:

Withstand Voltage: 2000V DC Min
Maximum Current: 5 amps
Temperature Rating: -10°C to +70°C
Life (Minimum): 10,000+ Operations, Cr <100mΩ
UK Patent: 2314464
US Patent: 6116959

Technical Data:

Designed to receive both mono and stereo 1/4" jack plugs, the S4S jack socket is produced from durable grade 1 black nylon. Contacts are Brass / Phosphor bronze, Tin plated for Low Contact Resistance and superior performance. Kinked PC legs provide stability for PCB wave soldering, the standard PC version is PC type C.

When ordering: Please state the contact arrangement required when a plug is inserted, from the front of the jack socket, using the following codes.

B - Break, N - No contact.

For example, S4SA/SH/BNBX2 is a dual 2-pole stacked mono jack socket, with 2.9mm nose.

Model S4SA has 2.9mm nose, S4SB has 3.5mm nose, S4SC has 4.6mm nose and S4SD has 2.9mm nose with fine thread (26TPI instead of 20TPI)

The Jack Sockets are supplied in cartons of 500 or 1000pcs and are produced in our China plant.