

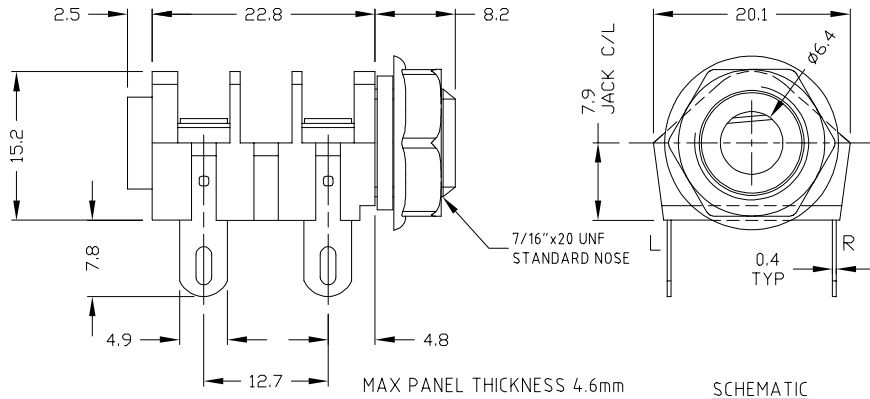
# CLIFF

## GOLD SWITCHED JACK SOCKETS

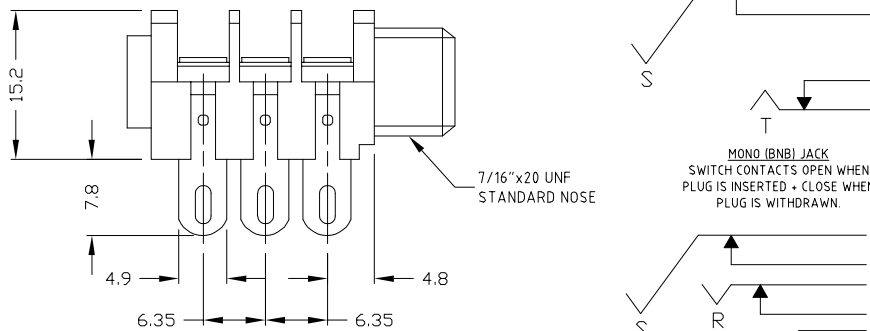
### 6.35mm JACK SOCKET



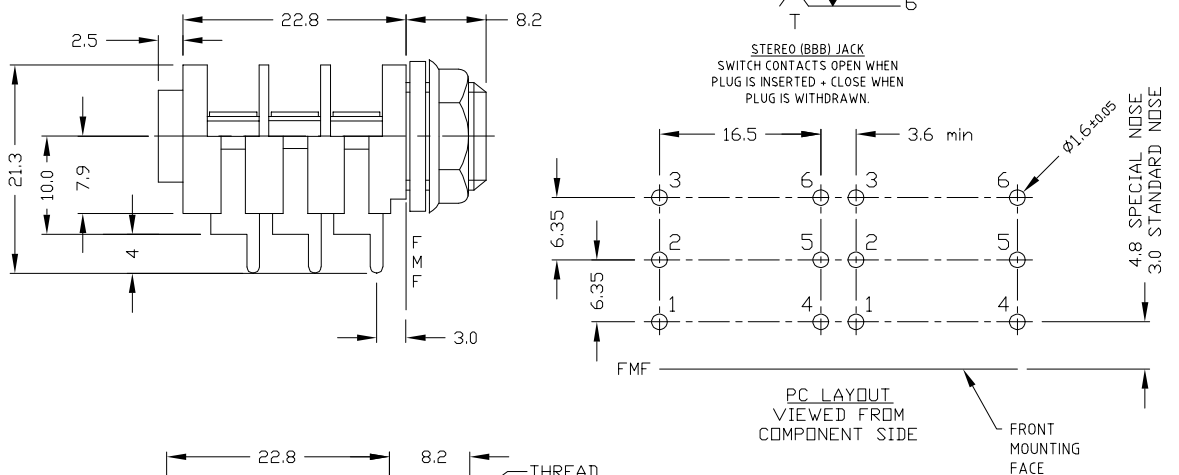
**CL11607**



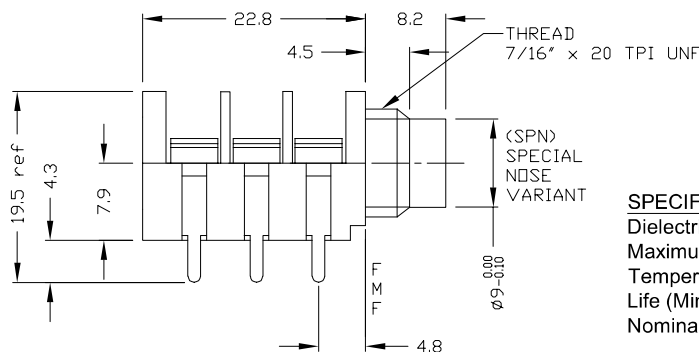
**CL12207**



**CL12327**



**CL12345**



#### SPECIFICATION

Dielectric Withstand voltage: 2000V DC Min.  
 Maximum Current: 5A  
 Temperature Rating: -10° C to +70° C  
 Life (Minimum): 10,000+ Operations  
 Nominal Contact Resistance: <50mΩ

#### DESCRIPTION

**CL11607** - Jack Socket Mono S2/BNB Solder Tag

**CL12207** - Jack Socket Stereo S2/BBB Solder Tag

**CL12327** - Jack Socket Stereo S2/BBB PC Tag Type A.

**CL12345** - Jack Socket Stereo S2/BBB Special Nose PC Tag Type C. No nut or washers.





# CLIFF

## GOLD SWITCHED JACK SOCKETS

### JACK SOCKET ACCESSORIES



**FCR14422** - EMI / RFI SCREEN FOR 6.35mm JACK SOCKETS



**CL14218** - BLACK COMBINED NUT/BEZEL FOR S4 TYPE JACK SOCKET



**CL14218GY** - GREY COMBINED NUT/BEZEL FOR S4 TYPE JACK SOCKET



**CL14218R** - RED COMBINED NUT/BEZEL FOR S4 TYPE JACK SOCKET



**CL1396** - RECESS PLATE TO ALLOW FLUSH MOUNTING OF 6.35mm JACK SOCKETS

