

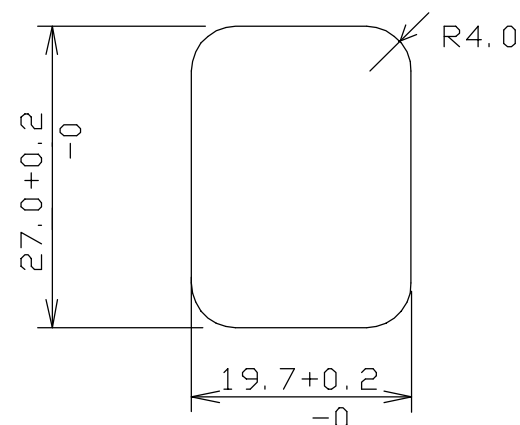
ISS.	AMEND	DATE
1	REDRAWN	01/03/90
7	ERROR CORRECT	06/07/95
8	CL191930 ADD	24/02/98
9	30.5 WAS 30.8	15/12/98
10	MS1X/SB ADDED	26/03/99
11	CORRECTIONS	30/04/99
12	30.3 WAS 30.5	27/03/01
13	FINS REMOVED	08/01/02
14	ENEC17 ADD	07/03/03
15	REMOVE CSA RoHS +	16/06/08
16	UL MARK REMOVED	31/01/17

VARIANTS

MODEL	P/No.	VERSION	DIM A
MS1 X/S	CL19192	A	2.1
MS1 X/SB	CL19192B	B	2.1
MS1 X/A	CL19194	¼" TAGS	2.1
MS1 X/S1	CL19191	A	1.1
MS1 X/A1	CL19193	¼" TAGS	1.1
MS1 X2P/A1	CL191930	¼" TAGS	1.1
MS1 X/A1 WHITE	CL191931	¼" TAGS	1.1

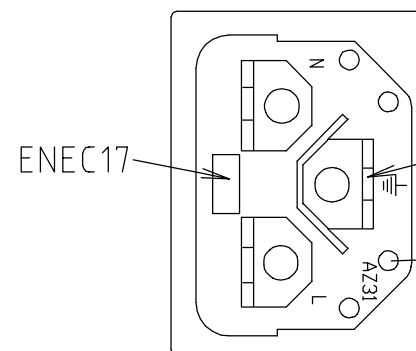
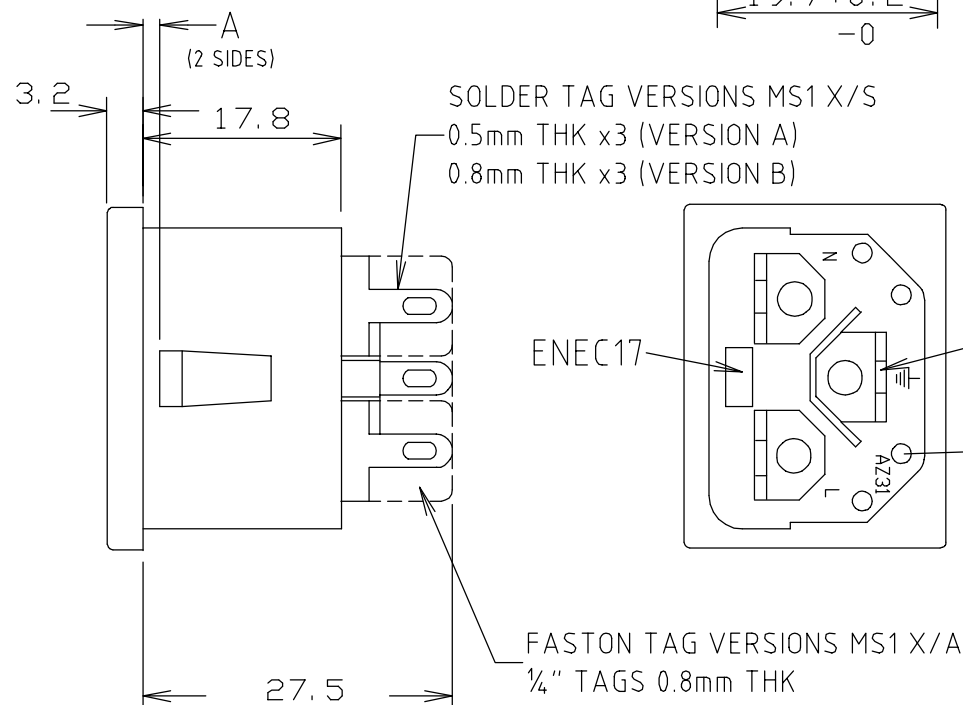
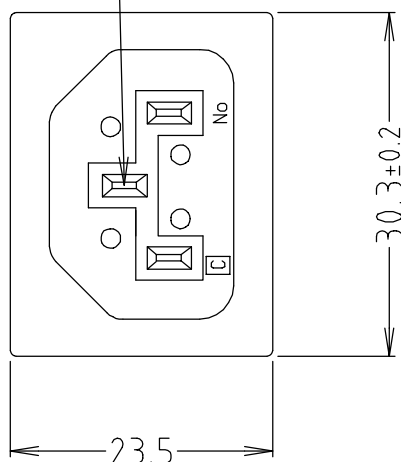
USES INSULATING BOOT CL1928

RECOMMENDED PANEL
CUT-OUT SIZE



NOTE:
MODELS S1/A1 SUITABLE FOR PANEL THICKNESS 0.8mm TO 1.1mm.
MODELS S/A SUITABLE FOR PANEL THICKNESS 1.0mm TO 2.1mm.

OMITTED ON
2 POLE



OMITTED ON
2 POLE

‡ AZ31

APPROVED ENEC17 FOR ALL EC COUNTRIES.

RoHS
COMPLIANT

TOLERANCE
NO DEC. PLACE ±
1 DEC. PLACE ± 0.20
2 DEC. PLACE ±
HOLE Ø ±
ANGLES ± 1°
UNLESS
OTHERWISE STATED

Cliff Electronic Components Ltd.

76 Holmehorpe Avenue, Holmehorpe Industrial Estate,
Redhill, Surrey, RH1 2PF, England, UK
Tel: 01737-771375 Fax: 01737-766012 Website: www.cliffuk.co.uk

DIMENSIONS IN MILLIMETERS UNLESS OTHERWISE STATED. WORK TO DIMENSIONS. REMOVE ALL BURRS. IF IN DOUBT ASK.

3rd ANGLE PROJECTION:

DO NOT SCALE

MATERIAL: POLYAMIDE UL94HB / BRASS

FINISH: AS MOULDED / Ni PLATED

DRAWN: C.A.M.J.

APPROVED: RWT

TITLE: AC INLET MS1 X SNAP IN TYPE

DRWG. No. **CL 19192**

FORM: A4DRWG

THE CONTENTS OF THIS DOCUMENT MUST NOT BE COPIED OR DISCLOSED TO A 3rd PARTY WITHOUT WRITTEN PERMISSION OF CLIFF UK. © 1990