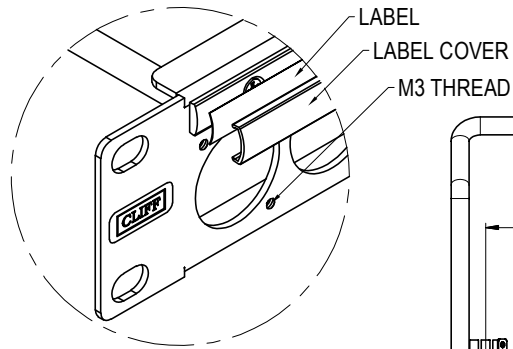
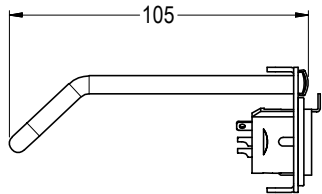
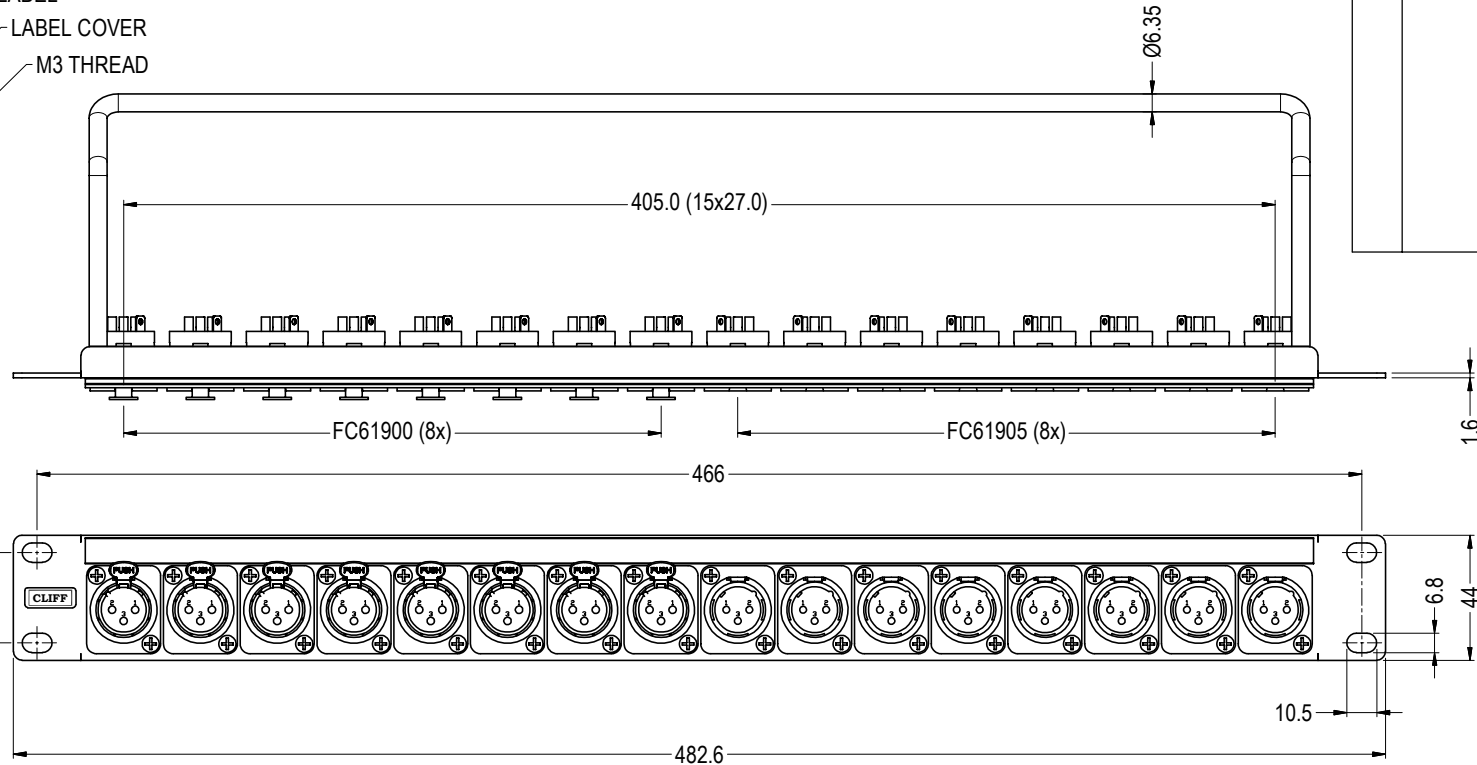


| ISS. | AMEND | DATE |
|------|-------------|----------|
| 1 | ISSUED | 22/10/18 |
| 2 | CLIFF LABEL | 20/05/19 |

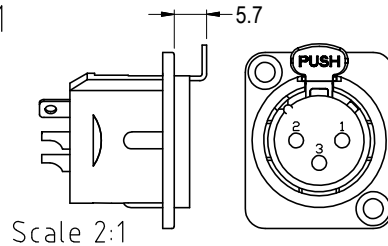


VIEW SHOWING LABEL & LABEL COVER REMOVED

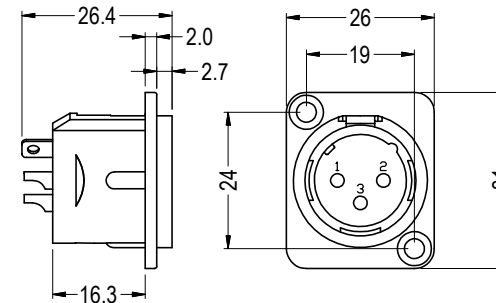


ASSEMBLE:

- 1x CP30151 1U 16x PANEL - M3 HOLES
- 8x FC61900 XLR SOCKET FEMALE 3DCF/BM LATCH
- 8x FC61905 XLR SOCKET MALE 3DCM/BM



FC61900 - XLR SOCKET FEMALE 3DCF/BM LATCH



FC61905 - XLR SOCKET MALE 3DCM/BM

RoHS
COMPLIANT

TOLERANCE
 NO DEC. PLACE ±
 1 DEC. PLACE ±
 2 DEC. PLACE ±
 HOLE Ø ±
 ANGLES ±
 UNLESS OTHERWISE STATED

DO NOT SCALE

Cliff Electronic Components Ltd.

76 Holmesthorpe Avenue, Holmesthorpe Industrial Estate,
 Redhill, Surrey, RH1 2PF, England, UK
 Tel: 01737-771375 Fax: 01737-766012 Website: www.cliffuk.co.uk

DIMENSIONS IN MILLIMETERS UNLESS OTHERWISE STATED. WORK TO DIMENSIONS. REMOVE ALL BURRS. IF IN DOUBT ASK.

3rd ANGLE PROJECTION:

MATERIAL: SEE CP30151 + FC61900 + FC61905 DRAWINGS

FINISH: BLACK - SEE CP30151 + FC61900 + FC61905 DRAWINGS

DRAWN: T.J.O.

APPROVED: DPJ

TITLE: RACK 8+8 XLR 3DCF 3DCM BM FM M3

DRWG. No. **CP30183**

FORM: A4DRWGf