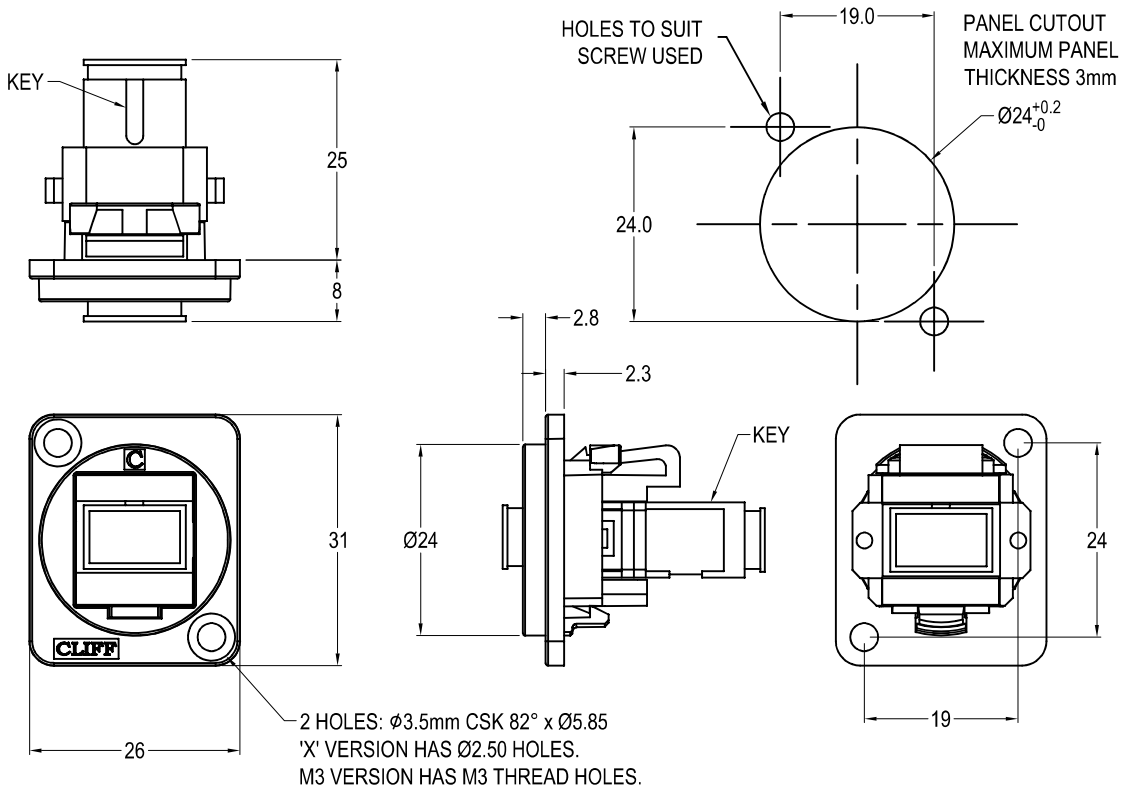




SC SIMPLEX SM FEEDTHROUGH CONNECTOR



Feedthrough Features

- Fits standard XLR Ø24mm cutout.
- No soldering or punch termination. Use standard cable for each connector style.
- Front or rear mounted.
- Low rear profile

General:

Please note: Functionality is affected by cable quality, length and cable wiring configuration.

Material:

1. Coupler Body: ABS
2. Plastic Frame: Polyamide UL94 V-2
3. Metal Frame: Diecast, Black or Nickel plated
4. Sleeve: Ceramic
5. Dust Cover: ABS
6. Insert: ABS/PC

VARIANTS

Part No.

- CP30215** SC Simplex SM Black plastic frame, CSK holes
- CP30215M** SC Simplex SM Nickel plated metal frame, CSK holes
- CP30215M3** SC Simplex SM Nickel plated metal frame, M3 holes
- CP30215MB** SC Simplex SM Black metal frame, CSK holes
- CP30215M3B** SC Simplex SM Black metal frame, M3 holes
- CP30215X** SC Simplex SM Black plastic frame, PLAIN holes

Notes:

1. Insertion Loss: ≤0.3dB
2. Dust caps may vary