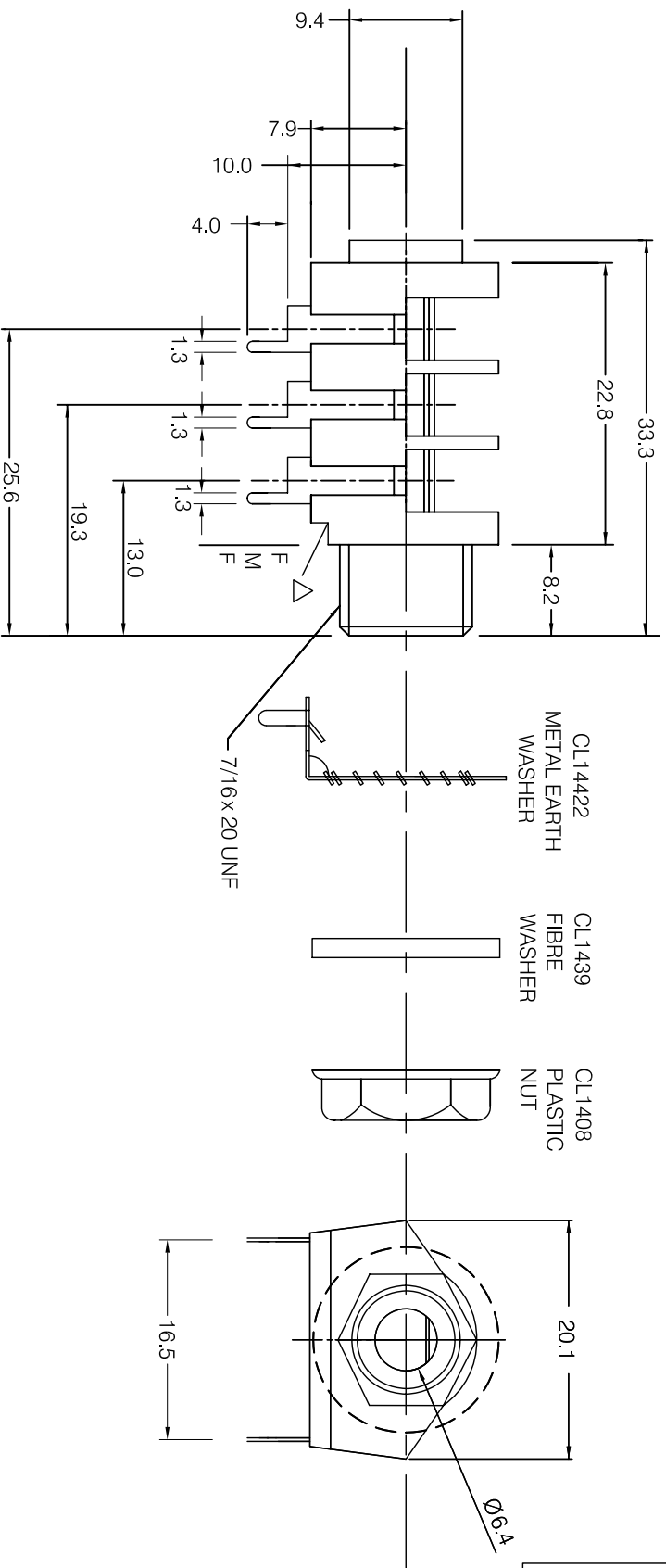


ISS	AMEND	DATE
1	1st DRAWN	22/06/09



- NOTE: 1. Δ THIS RECESS IS TO FACILITATE MOUNTING IN FLOWSOLDER JIGS
2. NUT AND FIBRE WASHER TO BE SUPPLIED AS LOOSE PARTS
3. METAL EARTH WASHER IS ASSEMBLED ON TO THE PLASTIC MouldING BODY

DIMENSIONS IN MILLIMETERS UNLESS OTHERWISE STATED. WORK TO DIMENSIONS. DO NOT SCALE DRAWING. 1ST ANGLE PROJECTION. REMOVE BURRS. IF IN DOUBT ASK.

SCALE N.T.S.

RoHS COMPLIANT	Tolerance NO DEC. PLACE \pm 1 DEC. PLACE ± 0.2 2 DEC. PLACE \pm DIA. HOLES \pm ANGLES $\pm 1/2^\circ$ UNLESS OTHERWISE STATED
	WHERE USED F.R.

MATERIAL: NYLON / NICKEL SILVER

TITLE: S2 JACK SOCKET (PC-A/BBB)

FINISH: AS MOULDED
 DRAWN: XHZ

APPD.: PCS

DRWG. NO : S2-1232TWF

FORM:A4DRWGH

CLIFF