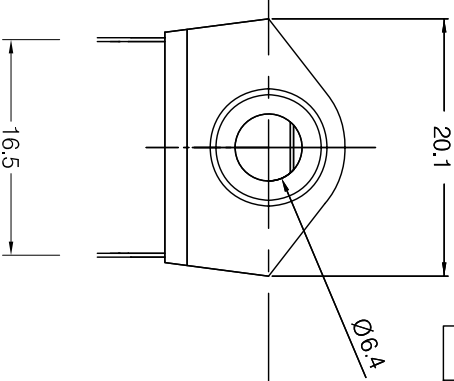


7/16x 20 UNF
(SPECIAL NOSE)



Ø6.4

- NOTE: 1. Δ THIS RECESS IS TO FACILITATE MOUNTING IN FLOWSOLDER JIGS
2. NUTS AND WASHERS WILL NOT BE SUPPLIED

DIMENSIONS IN MILLIMETERS UNLESS OTHERWISE STATED. WORK TO DIMENSIONS. DO NOT SCALE DRAWING. 1ST ANGLE PROJECTION. REMOVE BURRS. IF IN DOUBT ASK.

SCALE N.T.S.

<p>RoHS COMPLIANT</p>	<p>Tolerance</p> <p>NO DEC. PLACE \pm</p> <p>1 DEC. PLACE ± 0.2</p> <p>2 DEC. PLACE \pm</p> <p>DIA. HOLES \pm</p> <p>ANGLES $\pm 1/2^\circ$</p> <p>UNLESS</p> <p>OTHERWISE STATED</p>
	<p>WHERE USED F.R.</p>

ISS	AMEND	DATE
1	1st DRAWN	22/06/09

CLIFF

MATERIAL: NYLON / NICKEL SILVER

FINISH: AS MOULDED

DRAWN: XHZ

APPD.: PCS

TITLE: S2 JACK SOCKET (PC-A/SPN/BNB)

DRWG. NO : S2-1173

FORM:A4DRWG/H