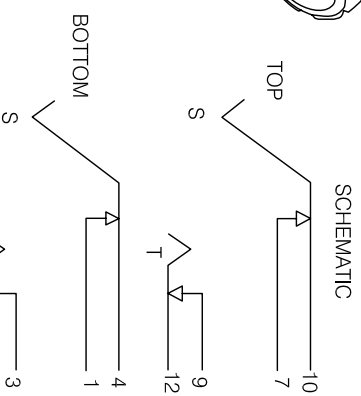
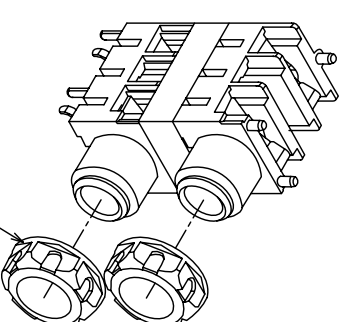
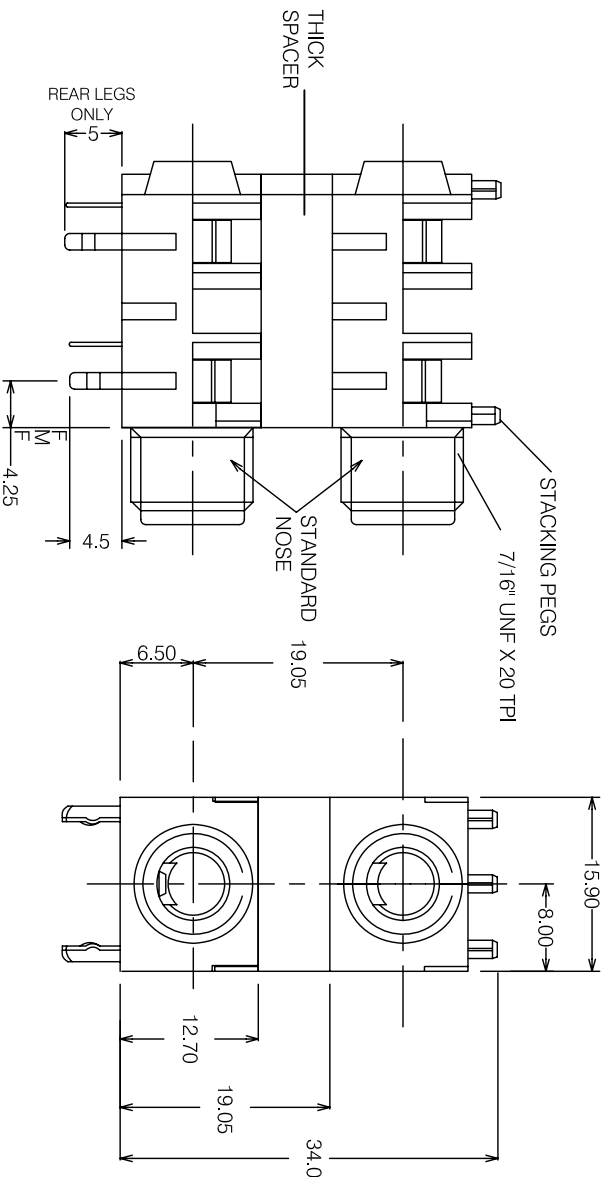
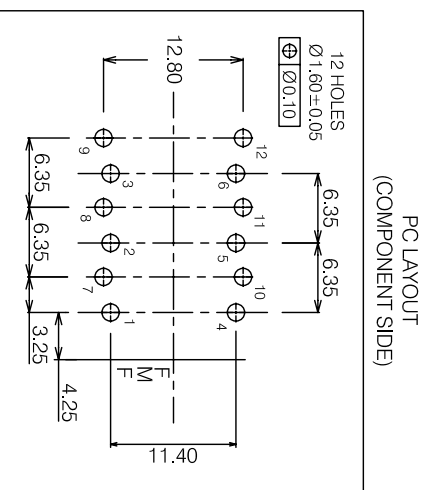
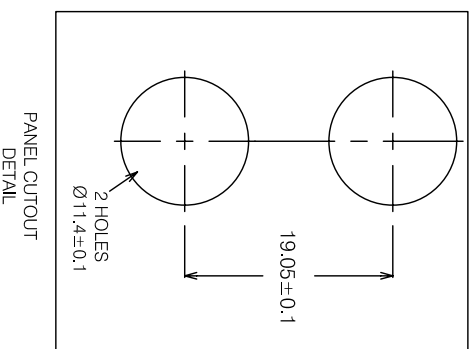
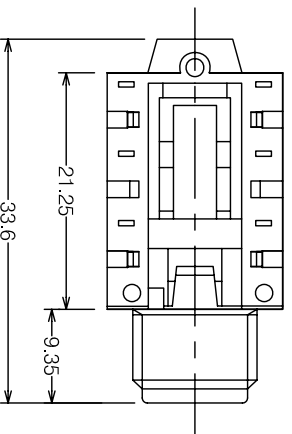


ISS	AMEND	DATE
1	1st DRAWN	14/11/03
2	NUT P/No ADD	07/05/04
3	VARIANT ADDED	13/05/05
4	ISSUED AS CL	14/03/08
5	ISSUED AS S1	25/06/09



SWITCH CONTACTS OPEN WHEN PLUG IS INSERTED, CLOSE WHEN PLUG IS WITHDRAWN.



SUPPLIED WITH 2 NUTS CL1406 SEPARATE  
TRAY PACKING 100/TRAY

DIMENSIONS IN MILLIMETERS UNLESS OTHERWISE STATED. WORK TO DIMENSIONS. DO NOT SCALE DRAWING. 3rd ANGLE PROJECTION. REMOVE BURRS. IF IN DOUBT ASK.

SCALE N.T.S.

**ROHS**  
**COMPLIANT**

**Tolerance**

- NO DEC. PLACE ±1.0
- 1 DEC. PLACE ±0.5
- 2 DEC. PLACE ±0.1
- DIA. HOLES ±0.1
- ANGLES ±1/2°
- UNLESS OTHERWISE STATED
- WHERE USED F.R.

MATERIAL: COMPOSITE

TITLE: STACK JACK S1C/SH/BNB X2 W/NUTS

FINISH: CLEAN

DRAWN: KHZ

APPD: PCS

DRWG NO: S1-1120

FORM:A4DRWGH

**CLIFF**