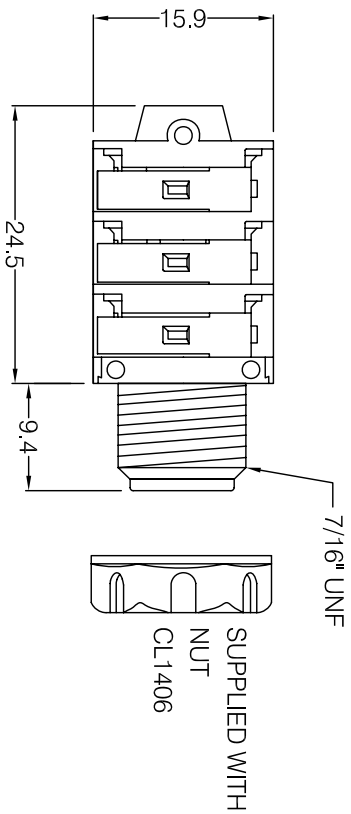
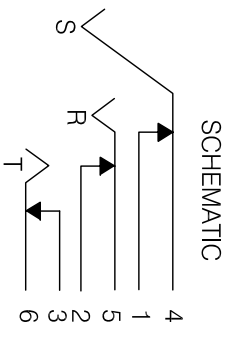
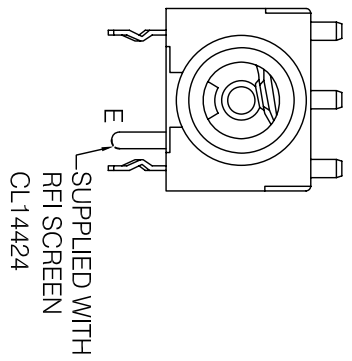
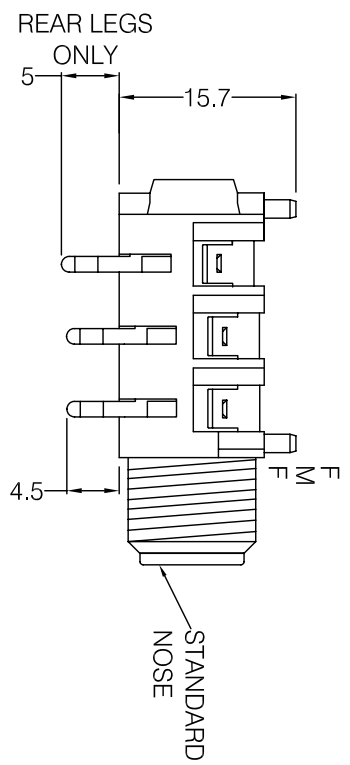
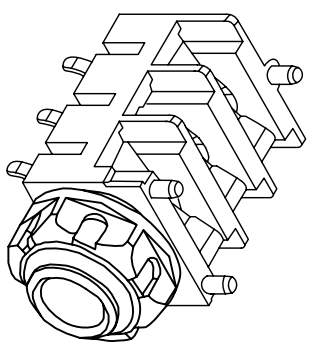
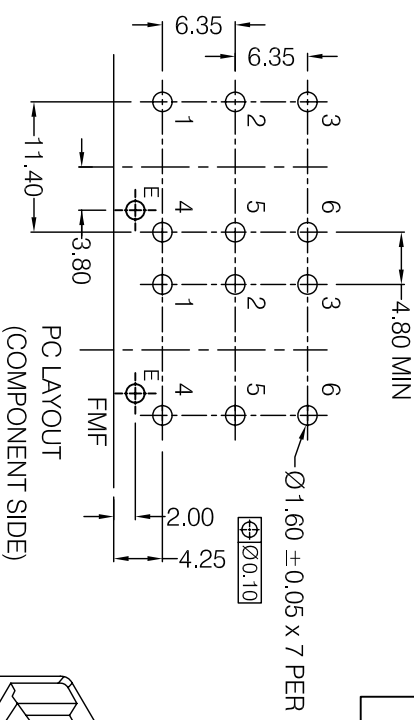


ISS	AMEND	DATE
1	1st DRAWN	19/01/01
2	LEG LENGTH	20/02/01
3	SCHEMATIC ADD	15/02/02
4	RE DRAWN	30/12/07
5	ISSUED AS S1	25/06/09



SUPPLIED WITH
NUT
CL1406



INSERTED PLUG MAKES WITH 4.5,
6 AND BREAKS 1,2,3. SWITCHES
MAKE ON PLUG REMOVAL

IF SPACING WASHERS ARE REQUIRED
THEY MUST BE PURCHASED SEPARATELY

DIMENSIONS IN MILLIMETERS UNLESS OTHERWISE STATED. WORK TO DIMENSIONS. DO NOT SCALE DRAWING. 3rd ANGLE PROJECTION. REMOVE BURRS. IF IN DOUBT ASK.

RoHS COMPLIANT	
Tolerance	NO DEC. PLACE ±1.0
	1 DEC. PLACE ±0.5
	2 DEC. PLACE ±0.1
	DIA. HOLES ±0.1
	ANGLES ±1/2°
	UNLESS OTHERWISE STATED
	WHERE USED F.R.
	SCALE N.T.S.

CLIFF

MATERIAL: COMPOSITE
FINISH: AS MOULDED / TIN PLATED
DRAWN: XHZ

TITLE: 1/4" JACK SOCKET S1C/BBB/BLK + CL14424 / W NUT
APPD: PCS
DRWG NO: S1-111505W
FORM: A4DRWGH