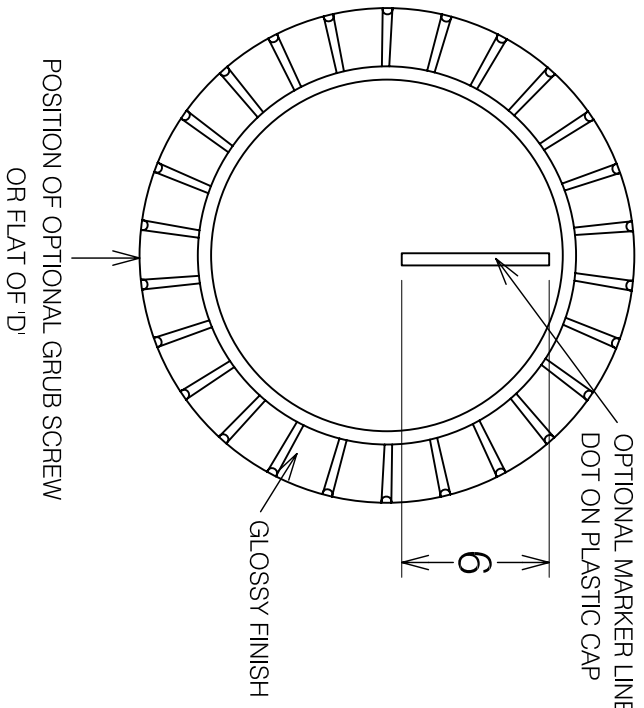
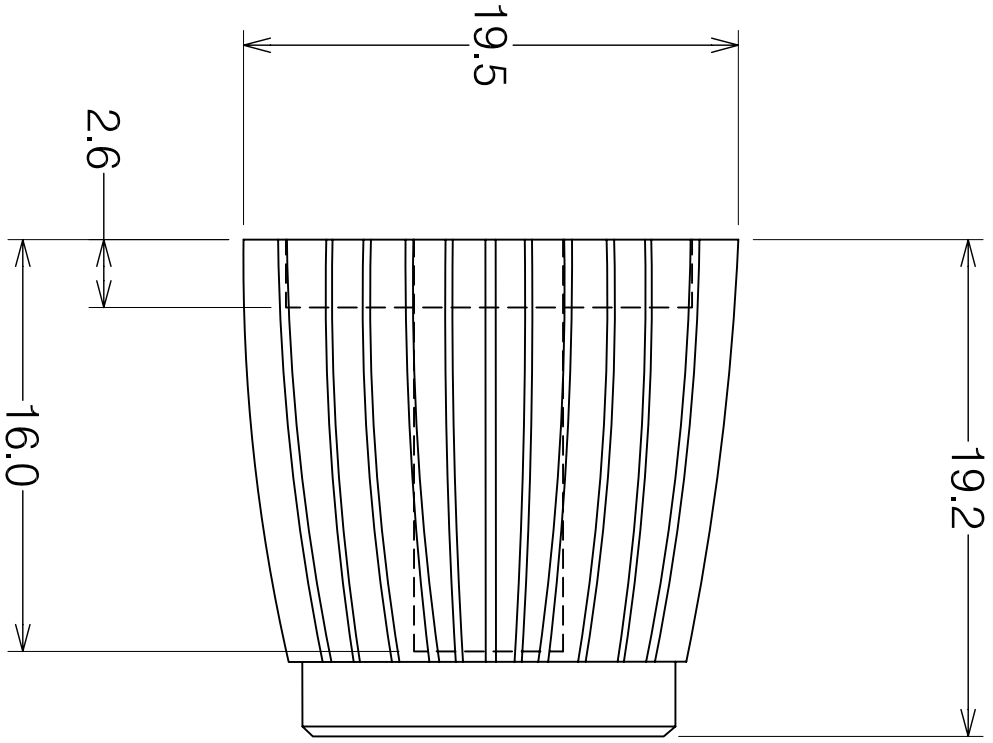


ISS	AMEND	DATE
1	1st DRAWN	14/08/91
2	CL1673 TO GOLD	22/04/93
3	CL1675 ADDED	26/11/93
4	CL16725 ADDED	25/07/94
5	CL16726 ADDED	16/09/94
6	CL16728 ADDED	09/09/97
7	16.0 DEPTH ADD	22/12/97
8	REDRAWN	10/05/09

SHAFT SIZE
WHERE NO SIZE IS
MENTIONED, SIZE
IS 1/4"



ROHS
COMPLIANT

Tolerance
NO DEC. PLACE ±0.25
1 DEC. PLACE ±0.20
2 DEC. PLACE ±
DIA. HOLES ±
ANGLES ±1/2°
UNLESS
OTHERWISE STATED
WHERE USED F.R.

DIMENSIONS IN MILLIMETERS UNLESS OTHERWISE STATED. WORK TO DIMENSIONS. DO NOT SCALE DRAWING. 3rd ANGLE PROJECTION. REMOVE BURRS. IF IN DOUBT ASK. SCALE N.T.S.

CLIFF

MATERIAL: NYLON / ALUMINIUM
FINISH: AS MOULDED / CLEAR ANODISED
DRAWN: XHZ
APPD: PCS

TITLE: KNOB K5 BLACK SF ML / GOLD CAP
DRAWG NO: K5-1675
FORM: A4DRWGH