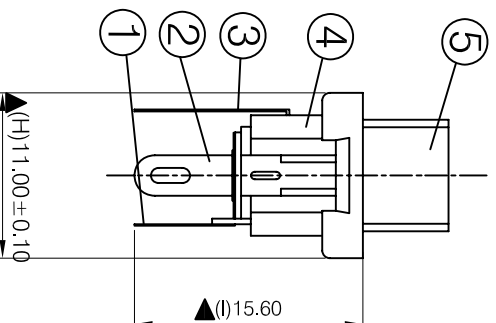
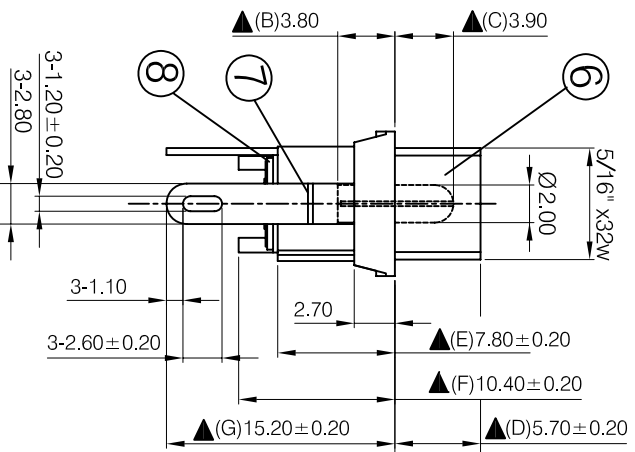


NUT

WASHER



| NO. | Description | Material | Q`TY | Finish |
|-----|----------------|----------------------|------|---------------|
| 1. | Pin Terminal | 0.3T Brass | 1 | Silver Plated |
| 2. | Sleeve Spring | 0.4T Phosphor Bronze | 1 | Silver Plated |
| 3. | Break Terminal | 0.3T Brass | 1 | Silver Plated |
| 4. | Housing | PBT | 1 | Black Color |
| 5. | Bushing | Brass | 1 | Nickel Plated |
| 6. | Pin(2.0 Ø) | Copper | 1 | Nickel Plated |
| 7. | Insulator A | Red Vulcanized Fibre | 1 | Red Color |
| 8. | Insulator B | Red Vulcanized Fibre | 1 | Red Color |
| 9. | Nut | 2.1T Brass | 1 | Nickel Plated |
| 10. | Washer | 0.3T Steel | 1 | Nickel Plated |

SPECIFICATIONS:

Contact Resistance : 30mΩ max
 Insulation Resistance : 100mΩ min. at DC 500V
 Dielectric Withstand Voltage : AC 500V for one minute
 Remark : ▲ : The Most Important Dimension

ROHS
COMPLIANT

Tolerance
 NO DEC. PLACE ±
 1 DEC. PLACE ±
 2 DEC. PLACE ±0.30
 DIA. HOLES ±
 ANGLES ± 1/2°
 UNLESS
 OTHERWISE STATED

WHERE USED F.R.

SCALE N.T.S.

DIMENSIONS IN MILLIMETERS UNLESS OTHERWISE STATED. WORK TO DIMENSIONS. DO NOT SCALE DRAWING. 3rd ANGLE PROJECTION. REMOVE BURRS. IF IN DOUBT ASK.

CLIFF

MATERIAL: COMPOSITE

FINISH: AS MOULDED

DRAWN: XHZ

TITLE: DC POWER JACK (2.0)

APPD : PCS

FORM:A4DRWGH

ISS AMEND DATE

1 1st DRAWN 11/03/09
 2 WAS FC681445 30/07/09

DRWG NO : DC-681445