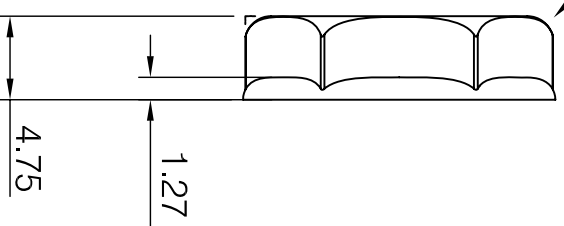
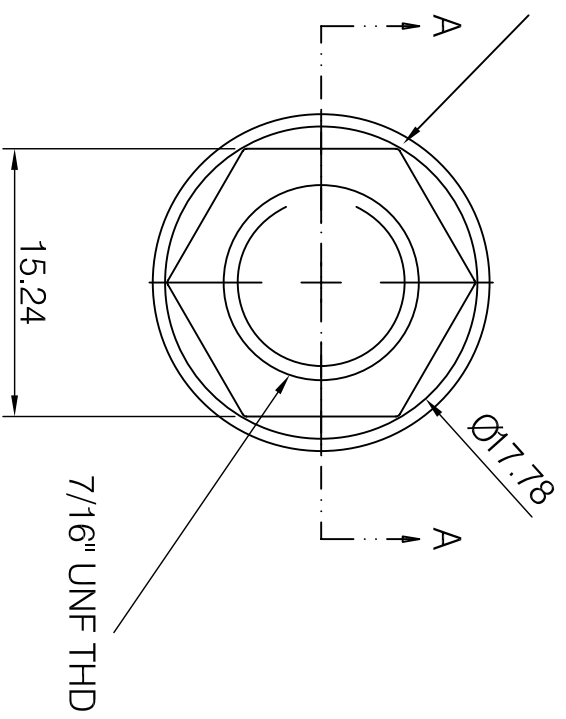
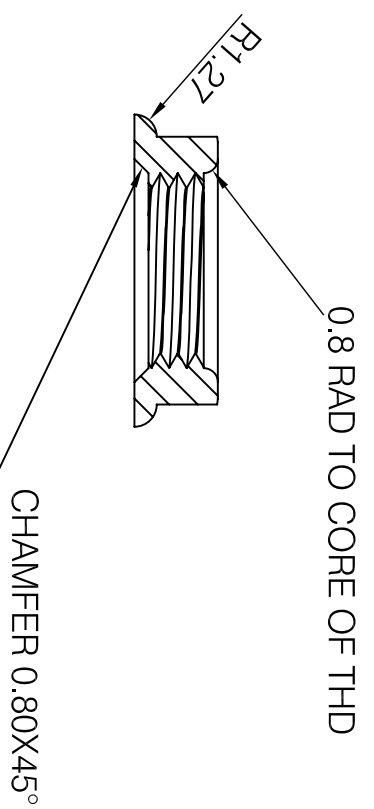


RADIUS CORNERS 1.50 TO BLEND WITH EDGE

CORNERS TO HAVE  
0.25 RAD



Part No	Variants
CL1408	S2 NUT BLACK
CL1409	S2 NUT WHITE
CL1410	S2 NUT GREY
CL1412	S2 NUT BLUE
CL1414	S2 NUT GREEN
CL1416	S2 NUT RED
CL1420	S2 NUT YEELLOW



SECTION A-A

ISS	AMEND	DATE
1	1st DRAWN	18/05/08
2	VARIANTS ADDED	10/05/09

DIMENSIONS IN MILLIMETERS UNLESS OTHERWISE STATED. WORK TO DIMENSIONS. DO NOT SCALE DRAWING. 3rd ANGLE PROJECTION. REMOVE BURRS. IF IN DOUBT ASK.

# CLIFF

MATERIAL: NYLON  
FINISH: POLISH FINISH ON OUTSIDE  
DRAWN: XHZ

APPD: PCS

TITLE: NUT FOR S2 JACK SOCKET  
DRWG NO: CL1408

FORM:A4DRWGH

**RoHS COMPLIANT**

**Tolerance**  
 NO DEC. PLACE ±0.50  
 1 DEC. PLACE ±0.20  
 2 DEC. PLACE ±0.10  
 HOLES, DIA ±0.10  
 ANGLES ±1/2°  
 UNLESS OTHERWISE STATED

WHERE USED F.R.  
SCALE N.T.S.