

CLIFF

www.cliffcomponents.com

1/4" ST Metal Jack Sockets



FS140



FS160



FS180



FS3570



FS3560



FS3575



FS3580



FS3550

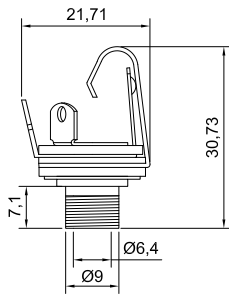
CLIFF USA® is the exclusive US distributor of the ST Professional range of 1/4" Jack Sockets. Manufactured in Italy, ST Jack Sockets are designed and manufactured to exacting specifications, incorporating nickel and gold plated brass bodies and phosphor bronze contacts for long term reliability. These Jack Sockets have been life tested to minimum of 20,000 operations. Mounting hardware is supplied unassembled.

Significant features include:

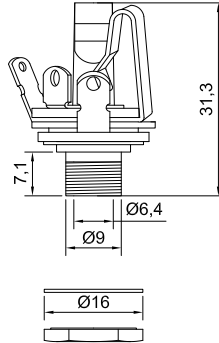
- Nickel and gold plated high quality machined brass construction.
- Nickel and gold plated phosphor bronze contacts for long term reliability.
- Life tested to a minimum of 10,000 operations.

Cliff Electronic Components, Inc.
5610 S. Topeka Blvd., Suite C,
Topeka, KS 66609
Telephone: (785) 862-2543
Fax: (785) 862-5723
Email: sales@cliffusa.com

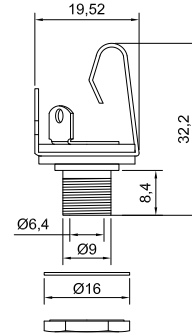
Cliff (Hong Kong) Limited
Room 1301, Seaview Commercial Building
21-24 Connaught Road West, Sheung Wan, Hong Kong
Telephone: (852) 2780 4576
Fax: (852) 2780 8535
Email: cliffhongkong@netvigator.com



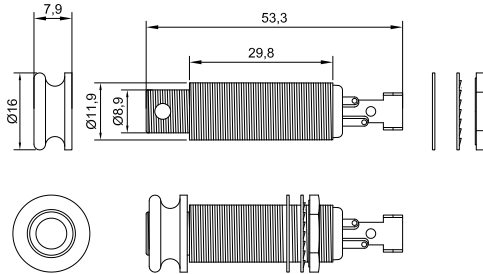
FS140



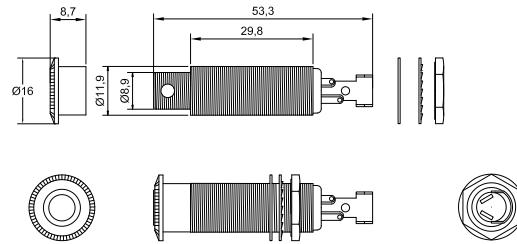
FS180



FS160



FS3560



FS3570

Technical Data:

Electrical:

Rated Current: 3A
 Rated Voltage: 60 VAC
 Dielectric Withstand: 1000v dc
 Insulation Resistance: >1000m ohm

Mechanical:

Life: >10.000cycles
 Solderability: complies with iec 68-2-20
 Test Temperature: -20°C to +70°C
 Insertion Force: mono 1.8kgs stereo 2.4kgs
 Removal Force: mono 1.7kgs stereo 1.8kgs

Materials:

Housing: Brass, nickel and gold plated
 Contacts: Phosphor bronze, nickel and gold plated
 Nut: Nickel plated brass hexagonal nut

Part No.	Model	Description
FS140	P-140	1/4" Mono, switched panel mounting with solder tags. Full thread metal nose.
FS160	P-160	1/4" Mono, un-switched panel mounting with solder tags. Full thread metal nose.
FS180	P-180	1/4" Stereo, un-switched panel mounting with solder tags. Full thread metal nose.
FS3550	P-3550	1/4" Stereo, guitar input Jack. Nickel plated brass construction.
FS3560	P-3560	1/4" Stereo, guitar input Jack with strap lock. Nickel plated brass construction.*
FS3570	P-3570	1/4" Stereo, guitar input Jack locking screw. Nickel plated brass construction.*
FS3575	P-3575	1/4" Stereo, guitar input Jack with locking screw. Nickel plated brass construction. Without switch.*
FS3580	P-3580	1/4" Stereo, guitar input Jack with locking screw. Nickel plated brass construction. With one switch.*

* Can be supplied with gold plated strap button.