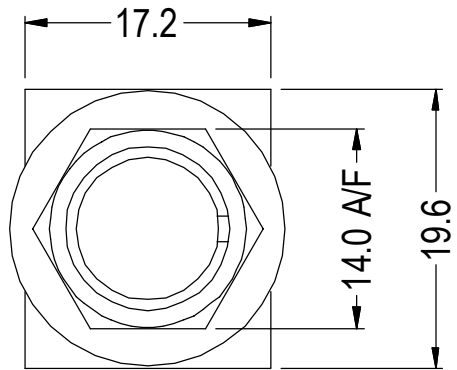
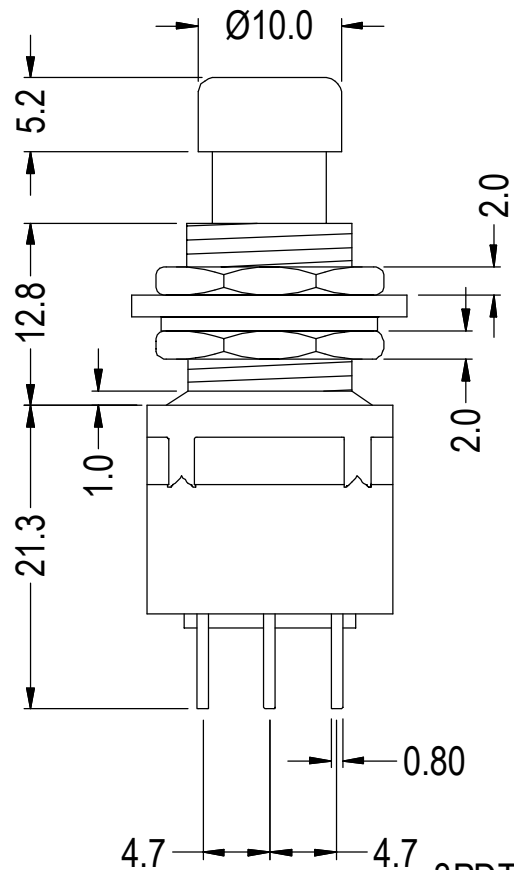


ISS.	AMEND	DATE
1	ISSUED	01/12/09
2	UPDATE, ADD ON/OFF	04/09/17

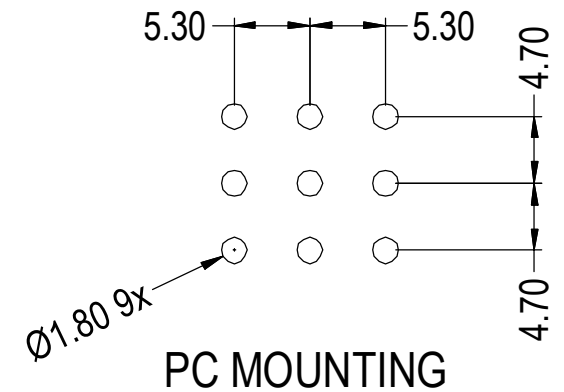
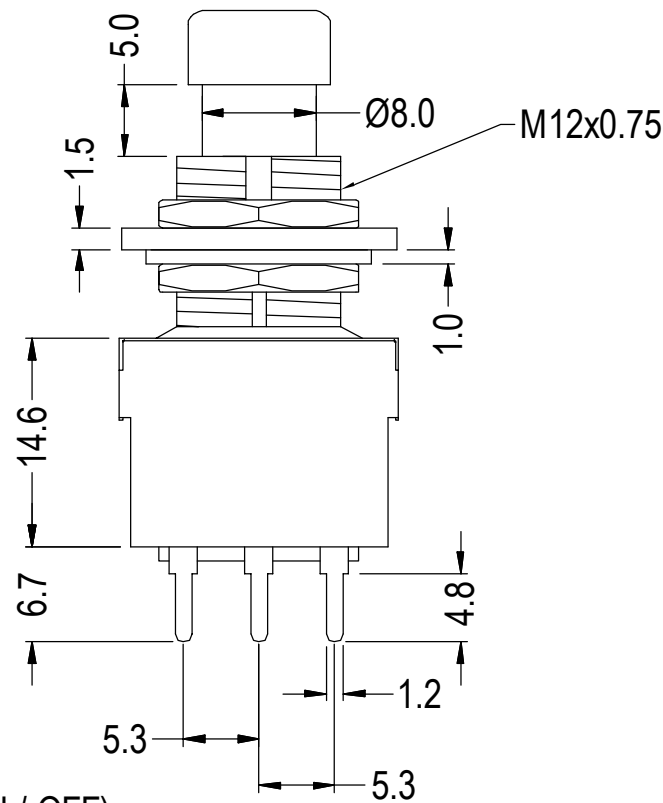


NOTES

- 1) Rating: AC 125V 4A 250V 2A
- 2) Contact R.: 20mΩ Max
- 3) Insulation R.: DC 500V 100MΩ Min
- 4) Dielectric Strength: AC 1500V 1 minute.
- 5) Electrical Life: 20,000 make/break cycles at full load.
- 6) Operating Temperature: -20°C ~65°C



3PDT PCB (ON / OFF)



RoHS
COMPLIANT

TOLERANCE
 NO DEC. PLACE ± 0.50
 1 DEC. PLACE ± 0.25
 2 DEC. PLACE ±
 HOLE Ø ±
 ANGLES ±
 UNLESS
 OTHERWISE STATED

DO NOT SCALE

Cliff Electronic Components Ltd.
 76 Holmetherpe Avenue, Holmetherpe Industrial Estate,
 Redhill, Surrey, RH1 2PF, England, UK
 Tel: 01737-771375 Fax: 01737-766012 Website: www.cliffuk.co.uk

DIMENSIONS IN MILLIMETERS UNLESS OTHERWISE STATED. WORK TO DIMENSIONS. REMOVE ALL BURRS. IF IN DOUBT ASK.

3rd ANGLE PROJECTION:

MATERIAL: BRASS / STEEL / NYLON 66
 FINISH: Ni HARDWARE / CONTACTS TIN PLATED / AS MOULDED
 DRAWN: T.J.O. APPROVED: D.P.J.

TITLE: PUSH BUTTON SWITCH - 3PDT PCB (ON / OFF)
 DRWG. No. **FC71102** FORM: A4DRWGH