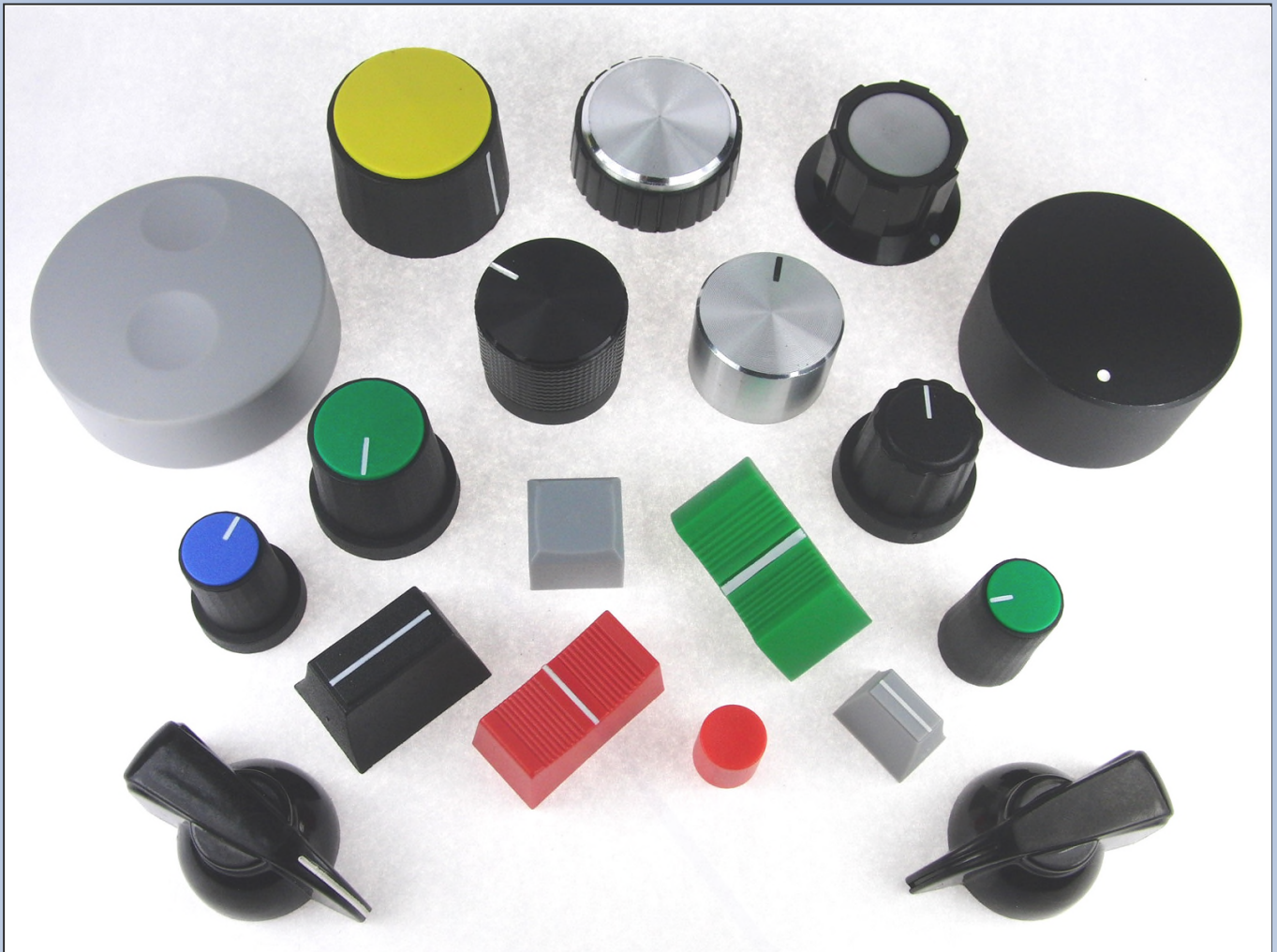




# Control Knobs from **Cliff UK**



## **Cliff Electronic Components Limited**

76 Holmethorpe Avenue,  
Holmethorpe Industrial Estate,  
Redhill, Surrey RH1 2PF. United Kingdom.

**Tel:** +44 (0)1737 771375

**Fax:** +44 (0)1737 766012

**E-mail:** sales@cliffuk.co.uk



Visit us online at:

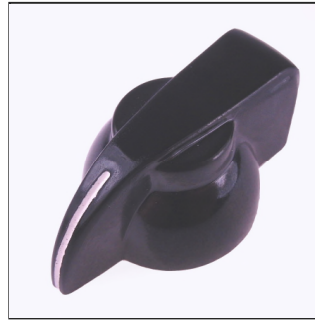
[www.cliffuk.co.uk](http://www.cliffuk.co.uk)

# CLIFF



## K1C

Chrome, Satin or coloured discs available.  
Base Diameter: 25.4  
Overall height: 15.1  
Shaft depth: 12



## K4C

K4C - Matl. Bakelite  
Base Diameter: 19  
Overall height: 13.7  
Shaft depth: 11.4



## K5

Marker line optional.  
Base Diameter: 19.5  
Overall height: 19.2  
Shaft depth: 16



## K6C

Base Diameter: 25.4  
Overall height: 12  
Shaft depth: 12



## K6C/SKT

Skirts are plain, 0-5-0 or 0-10  
Base Diameter: 41  
Overall height: 14  
Shaft depth: 10



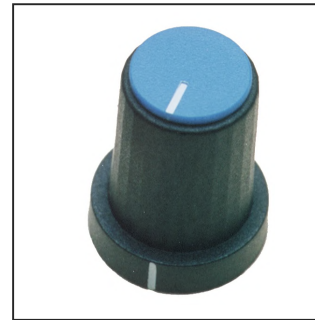
## K7C

Base Diameter: 19.1  
Overall height: 16  
Shaft depth: 14



## K8

Marker dot on skirt is standard.  
Base Diameter: 25.1  
Overall height: 16.7  
Shaft depth: 12



## K85

8 cap colours available, sold separately.  
Transparent model for encoder also available.  
Base Diameter: 14  
Overall height: 18  
Shaft depth: 11.5



## K85M

Two colour moulded. Body and line / cap available in 8 colours.  
Base Diameter: 14  
Overall height: 17.8  
Shaft depth: 12.5



## K88

Skirtless version of K85. 8 cap colours.  
Base Diameter: 12  
Overall height: 18  
Shaft depth: 11.5

All dimensions are approximate and in mm.

Drawings available on request. Contact [sales@cliffuk.co.uk](mailto:sales@cliffuk.co.uk)



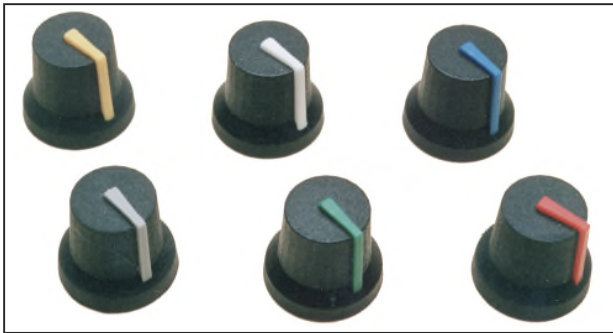
### K86R

2 colour moulded.  
6 standard colours.  
Soft touch finish.  
Base Diameter: 16.0  
Overall height: 15.0  
Shaft depth: 12



### K87MA, K87MAR

2 colour moulded. 8 standard colours. Push fitting only. Integral cap, not removeable.  
K87MA - Hard finish version.  
K87MAR - Rubber (Soft touch) finish  
Base Diameter: 16.8  
Overall height: 14.5  
Shaft depth: 12.8 (11.8 on 6mm SPL)



### K87MB

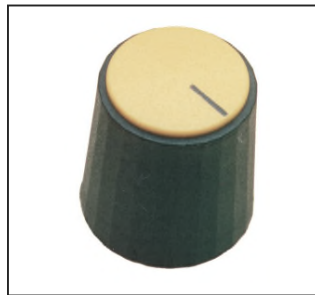
2 colour moulded. 8 standard colours. Push fitting only.  
K87MB - hard finish version.  
K87MBR - Rubber (Soft touch) finish.  
Base Diameter: 16.8  
Overall height: 14.5  
Shaft depth: 12.8 (11.8 on 6mm SPL)

Note: 2 colour moulded knobs may be subject to minimum production run quantities.



### K9

Has a skirt / nut cover. 8 cap colours, ordered separately.  
Base Diameter: 19.2  
Overall height: 19  
Shaft depth: 13.8



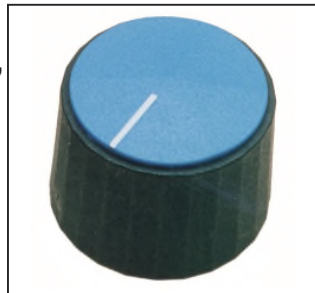
### K10

Without skirt. Cap is same as K9  
Base Diameter: 17  
Overall height: 18.5  
Shaft depth: 13



### K11

Push in cap, 8 colours, ordered separately.  
Base Diameter: 19.5  
Overall height: 19  
Shaft depth: 13.3  
Collet type 7.2



### K12

Push in cap, 8 colours or skirt as K6 (glued on).  
Base Diameter: 25.3  
Overall height: 19.2  
Shaft depth: 13.3  
Collet type 7.2

All dimensions are approximate and in mm.

**For further information, contact [sales@cliffuk.co.uk](mailto:sales@cliffuk.co.uk)**



# CLIFF



## K14

Aluminium clad plastic knob with diamond turned finish.  
Base Diameter: 15  
Overall height: 12.5  
Shaft depth: 10



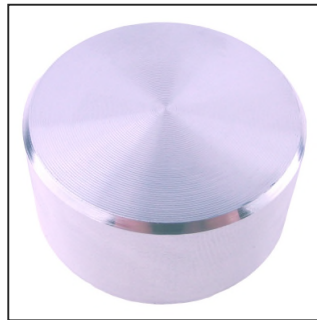
## K15

Aluminium clad plastic knob with diamond turned finish.  
Base Diameter: 20  
Overall height: 13  
Shaft depth: 12



## K15P

Plastic version of K15 with matt textured top.  
Base Diameter: 18.8  
Overall height: 11.2  
Shaft depth: 10



## K16

Aluminium clad plastic knob with diamond turned finish.  
Base Diameter: 30  
Overall height: 15  
Shaft depth: 12



## K16P

Plastic version of K16 with matt textured top.  
Base Diameter: 29  
Overall height: 12.7  
Shaft depth: 10



## K17

Matt non reflective finish, prominent marker line, serrated edge.  
Base Diameter: 29  
Overall height: 12.9  
Shaft depth: 10



## K18

Encoder knob with fast and slow drive. Available in 3 weights.  
Base Diameter: 39.6  
Overall height: 13.5  
Shaft depth: 13.5



## K19

Needs Ø16mm panel hole. 2 sizes.  
K19A - Ø15mm  
K19B - Ø23mm  
Base Diameter: 16  
Overall height: 17  
Shaft depth: 13.4



## C18

One piece knob and cap with printed marker line. Low cost.  
Base Diameter: 19.3  
Overall height: 16.3  
Shaft depth: 15



## C18/SKT

One piece knob and skirt. Integral cap. Skirt printed 0-10 or marker line.  
Base Diameter: 27.8  
Overall height: 15  
Shaft depth: 13

**K21** - Version of C18 with removeable cap.  
All dimensions are approximate and in mm.

# CLIFF



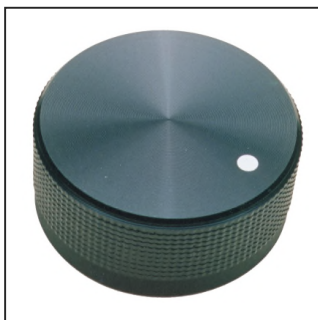
## KM12B

Knurled aluminium shell on plastic inner. Finish black anodised  
Base Diameter: 12  
Overall height: 12  
Shaft depth: 10



## KM15B

Knurled aluminium shell on plastic inner. Finish black anodised  
Base Diameter: 15  
Overall height: 15  
Shaft depth: 14



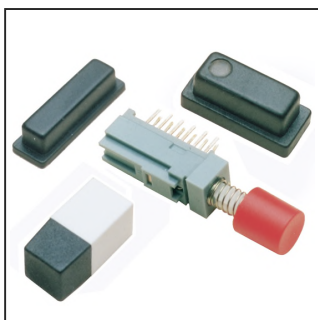
## KM20B - KM50B

Aluminium clad plastic knobs. The black anodised finish is relieved by bright diamond cut features. Knurled finish on the edge is standard. Various sizes from Ø20mm to Ø50mm. Push fix only. Optional marker line is diamond cut.  
Base Diameter: 20mm to 50mm  
Overall height: 17mm to 20mm  
Shaft depth: 2mm less than knob height



## KMR12 - KMR50

Aluminium clad plastic knobs with domed top. Smooth powder coated finish. Standard colours black or silver. Other colours subject to viable quantities. Various sizes Ø12mm to Ø50mm. Push fix only. Supplied in plastic trays.  
Base Diameter: 12mm to 50mm  
Overall height: 13mm to 25mm  
Shaft depth: 2mm less than knob height



## CUSTOM KNOBS AND BUTTONS

We can produce to your own designs. Sometimes we can make mould inserts for existing tooling to avoid the need to make new moulds. We have a number of semi-custom parts which can be available to any customers. Discuss any needs for non standard knobs or buttons with our Engineering department.

All dimensions in mm.

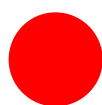
## ORDERING INFORMATION

### STANDARD COLOURS.

The colours shown below are for reference only and may not be identical to actual colours.



BLACK



RED



BLUE



YELLOW



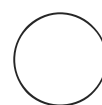
GREEN



ORANGE



GREY



WHITE

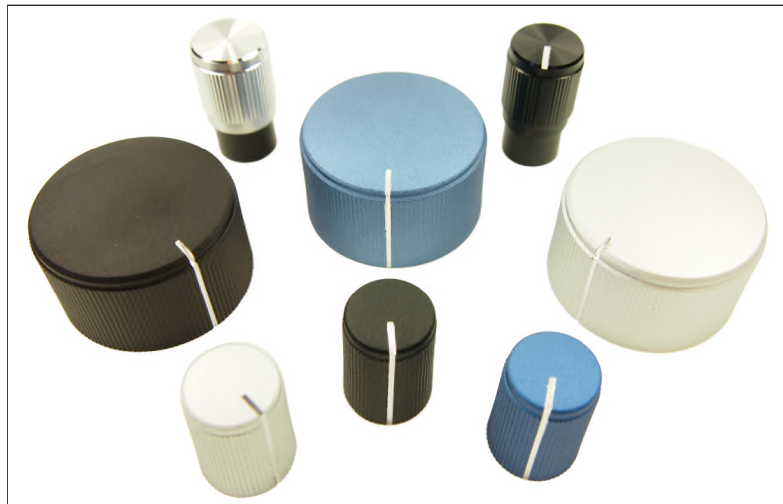
Custom colours can be available for single or multi colour moulded knobs.

Knob caps can be supplied plain, with a marker line (ML), marker dot (MD) or custom legend.

[For further information, contact sales@cliffuk.co.uk](mailto:sales@cliffuk.co.uk)

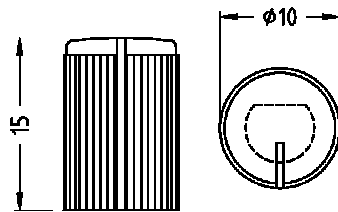
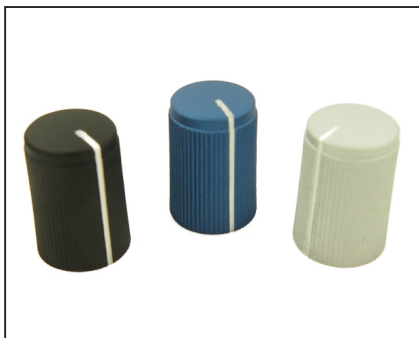
# CLIFF

## KNURLED ALUMINIUM SHELL KNOBS - KMK SERIES



Knobs for professional equipment - comprising machined aluminium shell on moulded plastic inner. Push on fixing. Max shaft depth 11mm.

### KMK10



#### KMK10

6mm Splined shaft

**FC7248** - Silver Anodised

**FC7249** - Black Anodised

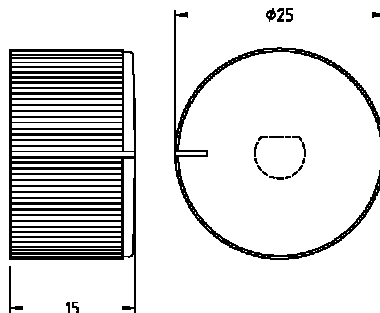
6mm USA 'D' shaft

**FC7250** - Silver Anodised

**FC7251** - Black Anodised

Other anodised colours available.

### KMK25



#### KMK25

6mm Splined shaft

**FC7252** - Silver Anodised

**FC7253** - Black Anodised

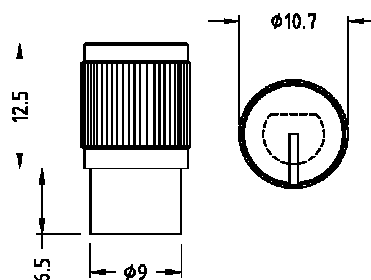
6mm USA 'D' shaft

**FC7254** - Silver Anodised

**FC7255** - Black Anodised

Other anodised colours available.

### KMK10E



#### KMK10E

6mm Splined shaft

**FC7256** - Silver Anodised

**FC7257** - Black Anodised

6mm USA 'D' shaft

**FC7258** - Silver Anodised

**FC7259** - Black Anodised

Other anodised colours available.

Drawings available on request. Contact [sales@cliffuk.co.uk](mailto:sales@cliffuk.co.uk)