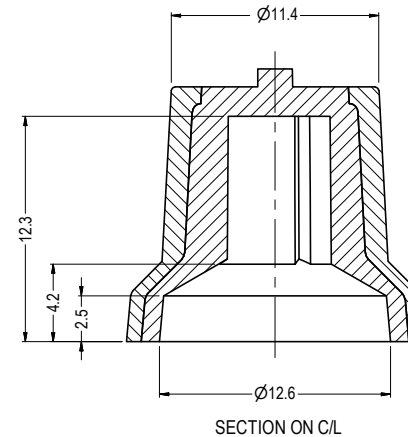
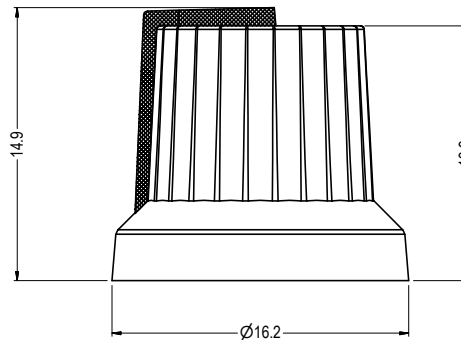
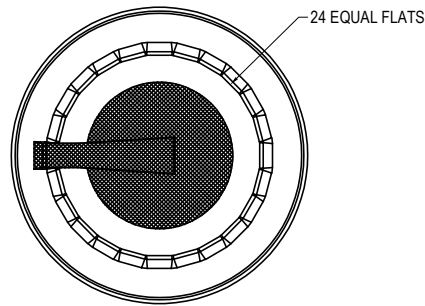
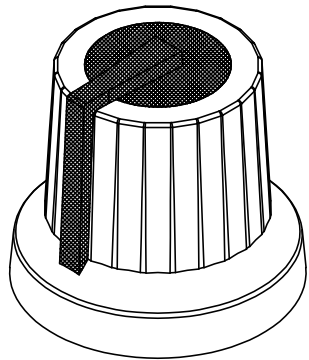
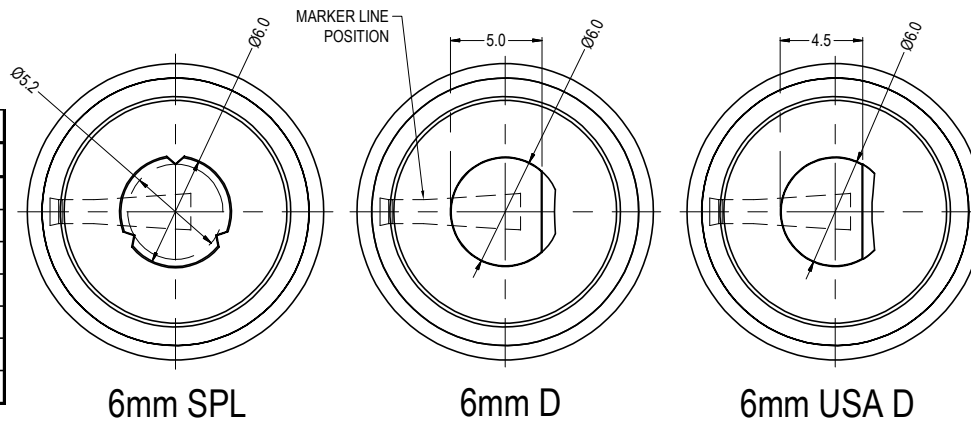


ISS.	AMEND	DATE
1	ISSUED	06/03/18



NOTES:-

- PART TO BE MADE TO 3D DATA SUPPLIED.
- PART TO BE FREE FROM SURFACE DEFECTS.
- COLOURS:
OVERMOULDED: BLACK.
MARKER LINE / INNER MOULDING: AS TABLE BELOW.
- OVERMOULDING : TPE.
INNER MOULDING: POLYPROPYLENE.



6mm SPLINE	
PART No.	M/L COLOUR
CL170822CR	WHITE
CL170823CR	RED
CL170825CR	GREY
CL170826CR	YELLOW
CL170827CR	BLUE
CL170828CR	GREEN
CL170829CR	ORANGE

6mm D	
PART No.	M/L COLOUR
CL170822BR	WHITE
CL170823BR	RED
CL170825BR	GREY
CL170826BR	YELLOW
CL170827BR	BLUE
CL170828BR	GREEN
CL170829BR	ORANGE

6mm USA D	
PART No.	M/L COLOUR
CL170822FR	WHITE
CL170823FR	RED
CL170825FR	GREY
CL170826FR	YELLOW
CL170827FR	BLUE
CL170828FR	GREEN
CL170829FR	ORANGE

1st DRAWN: 26/08/1992

RoHS
COMPLIANT

TOLERANCE
 NO DEC. PLACE ± 0.50
 1 DEC. PLACE ± 0.20
 2 DEC. PLACE ± 0.10
 HOLE Ø ± 0.10
 ANGLES ± 1/2°
 UNLESS OTHERWISE STATED

Cliff Electronic Components Ltd.

76 Holmehorpe Avenue, Holmehorpe Industrial Estate,
 Redhill, Surrey, RH1 2PF, England, UK
 Tel: 01737-771375 Fax: 01737-766012 Website: www.cliffuk.co.uk

DIMENSIONS IN MILLIMETERS UNLESS OTHERWISE STATED. WORK TO DIMENSIONS. REMOVE ALL BURRS. IF IN DOUBT ASK.

3rd ANGLE PROJECTION:

DO NOT SCALE

MATERIAL: POLYPROPYLENE OVERMOULDED WITH SOFT-TOUCH TPE

TITLE: KNOB K87MAR

FINISH: LIGHT SPARK

DRAWN: NJB

APPROVED: DPJ

DRWG. No. **CL170821**

FORM: A4DRWGH

THE CONTENTS OF THIS DOCUMENT MUST NOT BE COPIED OR DISCLOSED TO A 3rd PARTY WITHOUT WRITTEN PERMISSION OF CLIFF UK. © 1992