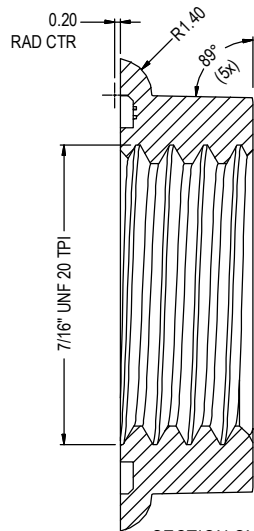
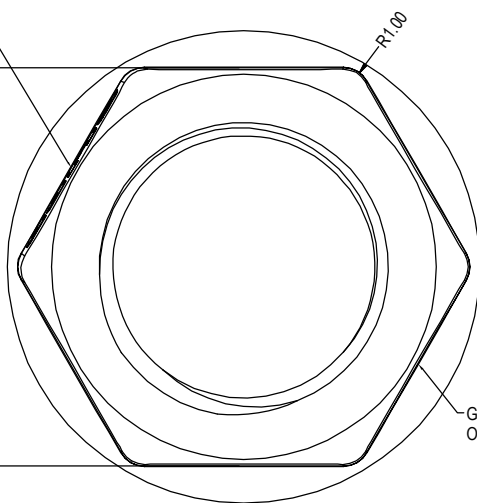


ISS.	AMEND	DATE
1	ISSUED	20/10/05
2	UPDATE - NEW TOOL	11/05/17

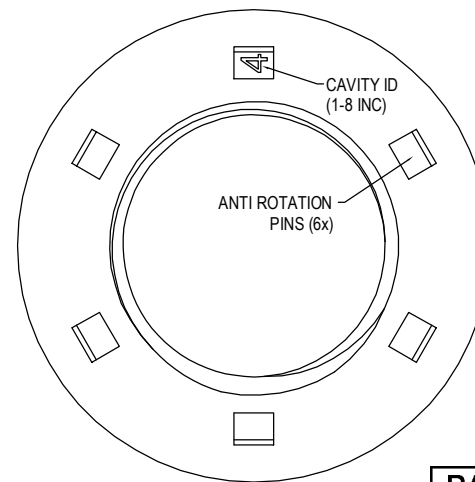
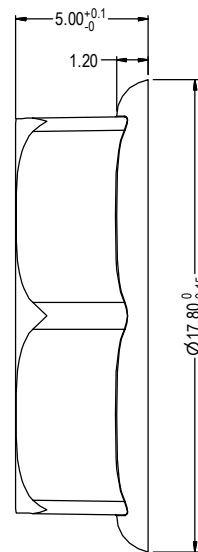


2.5° DRAFT LOGO FACE ONLY

15.00 A/F HEX



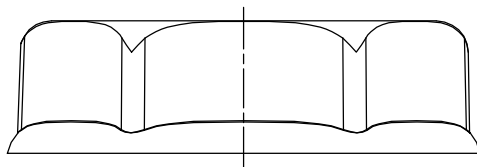
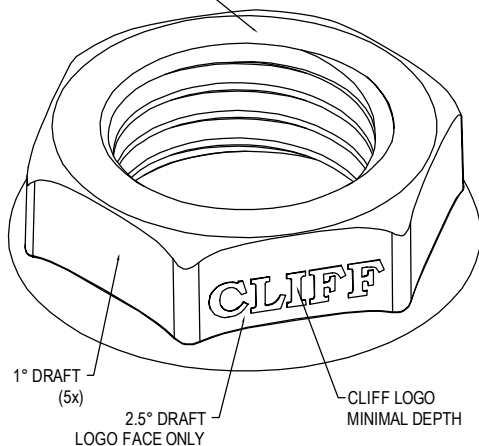
GATE OPPOSITE LOGO



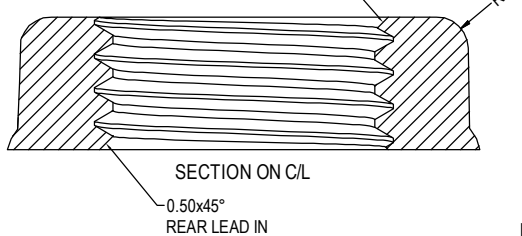
NOTE
 1) MAKE TO 3D CAD FILE SUPPLIED.
 2) PARTS TO BE FREE FROM FLASH AND SINK.
 3) MADE IN SAME TOOL AS FCR1406 S1C NUT
 4) 1° DRAFT PERMISSIBLE

PART No.	COLOUR
FCR1408	BLACK
FCR1409	WHITE
FCR1410	GREY
FCR1412	BLUE
FCR1414	GREEN
FCR1416	RED
FCR1420	YELLOW

0.50x45° FRONT LEAD IN



0.50x45° FRONT LEAD IN

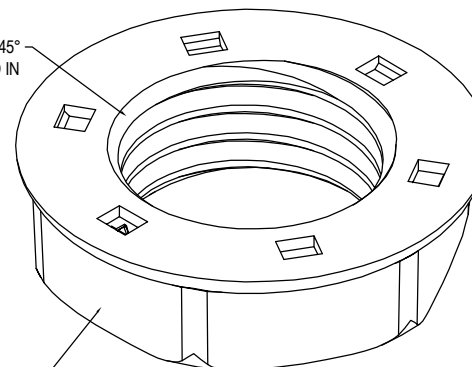


SECTION ON C/L

0.50x45° REAR LEAD IN

0.50x45° REAR LEAD IN

SUB GATE ON THIS FACE. PARTS MUST AUTO DE-GATE



RoHS
COMPLIANT

TOLERANCE
 NO DEC. PLACE ± 0.50
 1 DEC. PLACE ± 0.20
 2 DEC. PLACE ± 0.10
 HOLE Ø ± 0.10
 ANGLES ± 1/2°
 UNLESS OTHERWISE STATED

DO NOT SCALE

Cliff Electronic Components Ltd.
 76 Holmehorpe Avenue, Holmehorpe Industrial Estate,
 Redhill, Surrey, RH1 2PF, England, UK
 Tel: 01737-771375 Fax: 01737-766012 Website: www.cliffuk.co.uk

DIMENSIONS IN MILLIMETERS UNLESS OTHERWISE STATED. WORK TO DIMENSIONS. REMOVE ALL BURRS. IF IN DOUBT ASK.

3rd ANGLE PROJECTION:

MATERIAL: NYLON 6 - COLOUR SEE TABLE

TITLE: S2C NUT (7/16" UNF 20 TPI)

FINISH: LIGHT SPARK 27 VDI

DRAWN: C.A.M.J.

APPROVED: R.W.T.

DRWG. No. **FCR1408**

FORM: A4DRWGH

THE CONTENTS OF THIS DOCUMENT MUST NOT BE COPIED OR DISCLOSED TO A 3rd PARTY WITHOUT WRITTEN PERMISSION OF CLIFF UK. © 2005