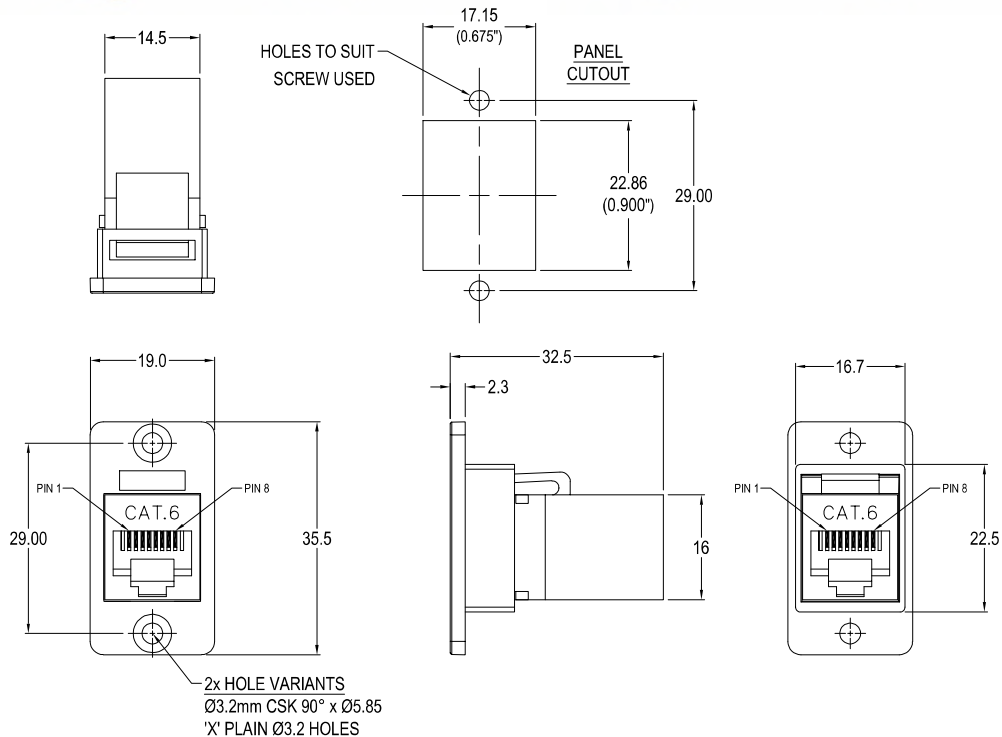


# CLIFF

## SLIM CAT.6 RJ45 FRONT MOUNTING METAL FRAME FEEDTHROUGH



### Part No.

<b>CP30622M</b>	SLIM FM Cat.6 RJ45 Nickel frame, CSK holes
<b>CP30622MB</b>	SLIM FM Cat.6 RJ45 Black metal frame, CSK holes
<b>CP30622MX1</b>	SLIM FM Cat.6 RJ45 Nickel frame, Ø3.2 PLAIN holes
<b>CP30622MBX1</b>	SLIM FM Cat.6 RJ45 Black metal frame, Ø3.2 PLAIN holes

### Feedthrough Features

- Fits standard rectangular cutout.
- Various hole mounting options.
- No soldering or punch termination. Use standard cable for each connector style.
- Low rear profile.

### General:

Please note: Functionality is affected by cable quality, length and cable wiring configuration.

### Material:

1. RJ45 In-Line Coupler: ABS UL94-V0
2. RJ45 In-Line Coupler Contact: Phosphor Bronze, 3-50 micro inches gold plating over nickel plate.

3. PCB: FR4

4. Frame: Diecast, Nickel or Black plated

### Performance:

1. T568A & T568B wiring.
2. Meet ISO/IEC 11801 and EN50173
3. Meet ANSI/TIA/EIA 568B.2
4. Rating: 125VAC RMS 1.5A
5. Operating Temperatures: Min -10°C Max +60°C