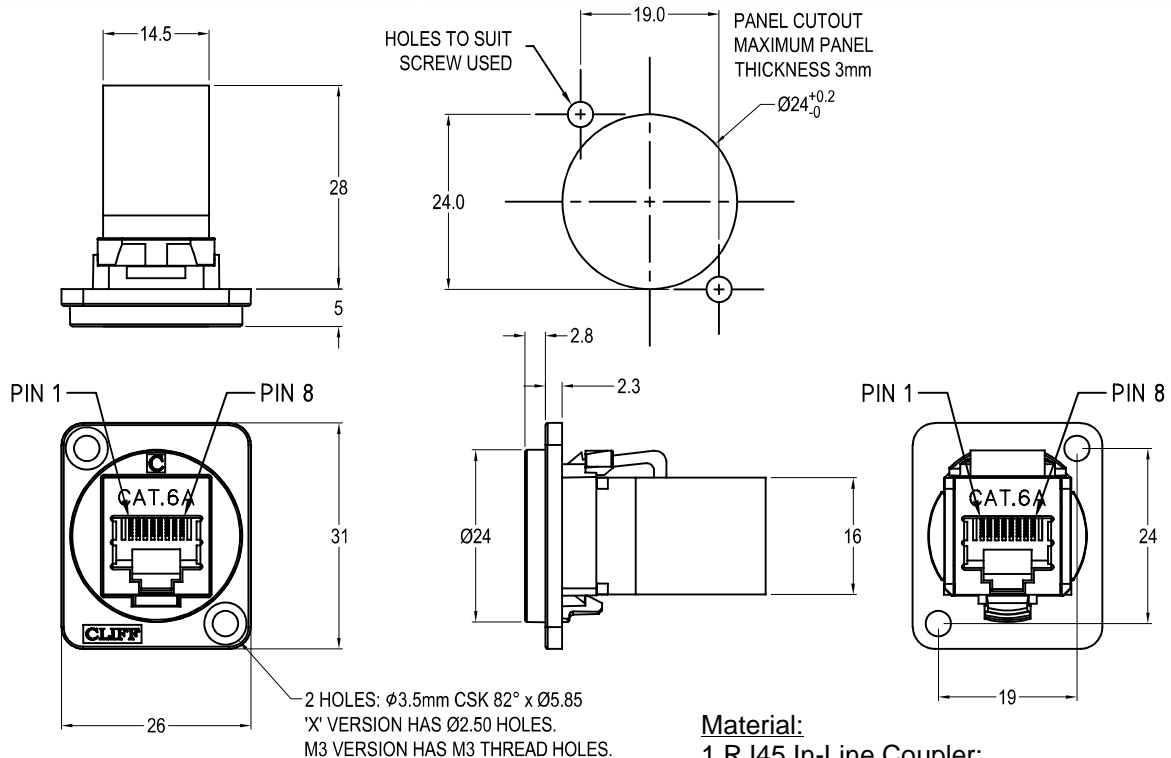


CLIFF

CAT.6A SHIELDED RJ45 FEEDTHROUGH CONNECTOR



Feedthrough Features

- Fits standard XLR Ø24mm cutout.
- No soldering or punch termination. Use standard cable for each connector style.
- Front or rear mounted.
- Low rear profile

General:

Please note: Functionality is affected by cable quality, length and cable wiring configuration.

Other models available:

Part No.

- | | |
|--------------------|---|
| CP30225S | Cat.6A Shielded RJ45 Black plastic frame, CSK holes |
| CP30225SM | Cat.6A Shielded RJ45 Nickel plated metal frame, CSK holes |
| CP30225SM3 | Cat.6A Shielded RJ45 Nickel plated metal frame, M3 holes |
| CP30225SMB | Cat.6A Shielded RJ45 Black metal frame, CSK holes |
| CP30225SM3B | Cat.6A Shielded RJ45 Black metal frame, M3 holes |
| CP30225SX | Cat.6A Shielded RJ45 Black plastic frame, PLAIN holes |

Material:

- 1.RJ45 In-Line Coupler:
PC/ABS, UL 94V-0, Black colour
- 2.RJ45 In-Line Coupler Contact:
Phosphor Bronze, 3-50 micro inches gold plating over nickel plate.
- 3.PCB: FR4, UL 94V-0
4. Plastic Frame: Polyamide UL94 V-2
5. Metal Frame: Diecast, Black or Nickel plated

Performance:

- 1.T568A & T568B wiring.
- 2.Meet ISO/IEC 11801 and EN50173
- 3.Meet ANSI/TIA/EIA 568B.2
- 4.Operating temperature: Min -10°C Max +70°C