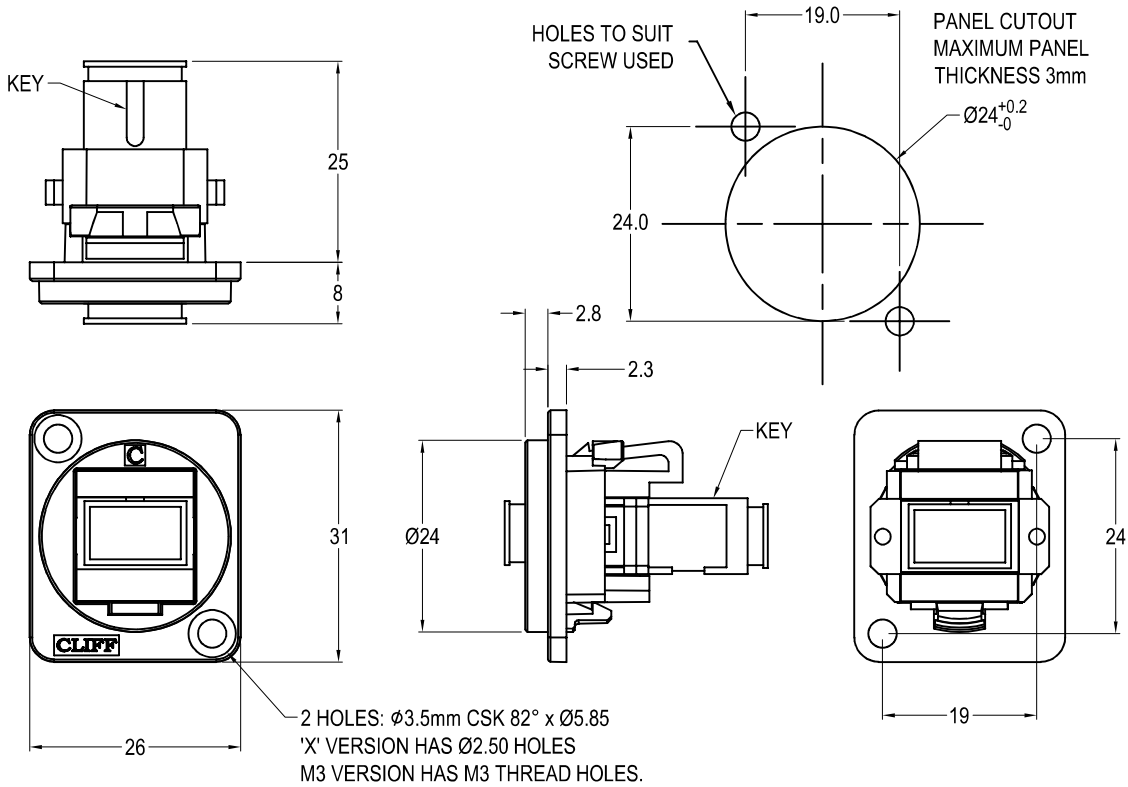




SC SIMPLEX MM FEEDTHROUGH CONNECTOR



Feedthrough Features

- Fits standard XLR $\varnothing 24$ mm cutout.
- No soldering or punch termination. Use standard cable for each connector style.
- Front or rear mounted.
- Low rear profile

General:

Please note: Functionality is affected by cable quality, length and cable wiring configuration.

Material:

1. Coupler Body: ABS
2. Plastic Frame: Polyamide UL94 V-2
3. Metal Frame: Diecast, Black or Nickel plated
4. Sleeve: Ceramic
5. Dust Cover: ABS
6. Insert: ABS/PC

VARIANTS

Part No.

- | | |
|-------------------|--|
| CP30216 | SC Simplex MM Black plastic frame, CSK holes |
| CP30216M | SC Simplex MM Nickel plated metal frame, CSK holes |
| CP30216M3 | SC Simplex MM Nickel plated metal frame, M3 holes |
| CP30216MB | SC Simplex MM Black metal frame, CSK holes |
| CP30216M3B | SC Simplex MM Black metal frame, M3 holes |
| CP30216X | SC Simplex MM Black plastic frame, PLAIN holes |

Notes:

1. Insertion Loss: ≤ 0.3 dB
2. Dust caps may vary