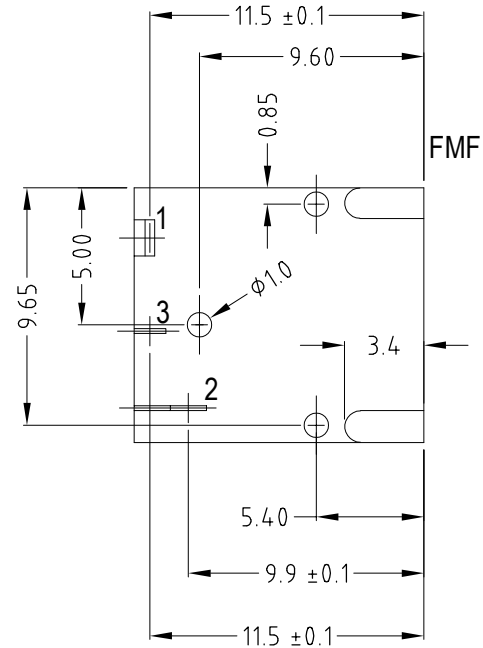
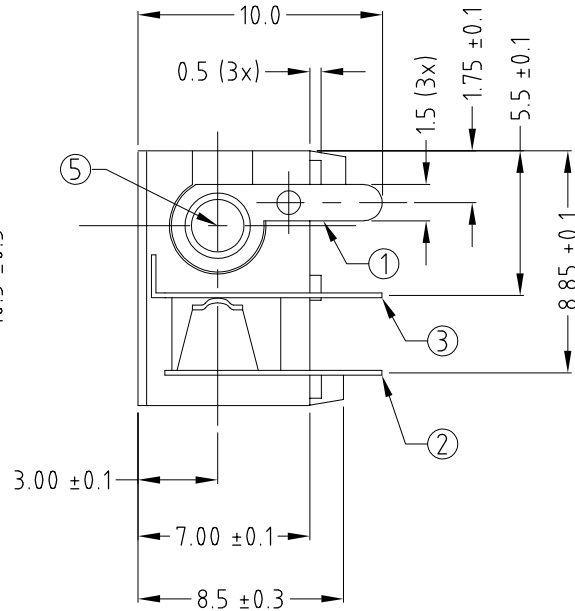
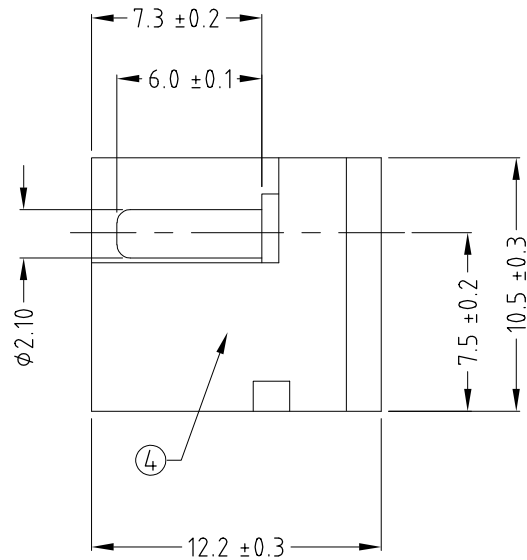
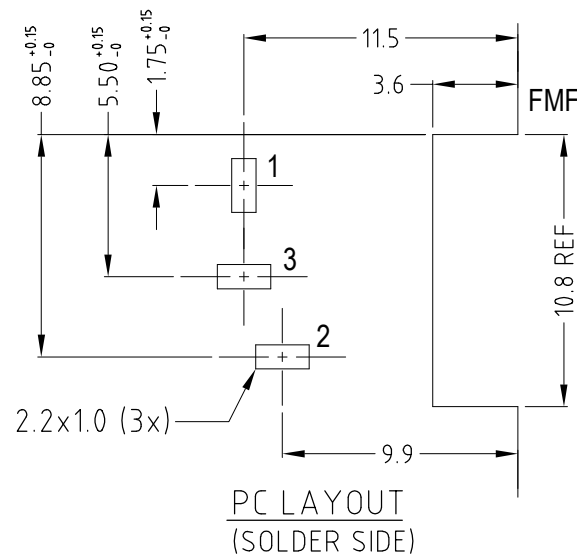


ISS.	AMEND	DATE
1	REDRAWN	29/05/90
2	MATERIAL PBT	14/02/91
3	ERROR CORRECT	30/07/93
4	P/No.s ADDED	17/02/94
5	REAR VIEW ERROR	23/08/95
6	DIMS CORRECTED	23/03/07
7	UPDATED, DEL 12B	04/08/22



ITEM	DESCRIPTION	MATERIAL	FINISH
1	CTR PIN CONTACT	BRASS	Ag PLATE
2	SLEEVE SPRING	PHOSPHOR BRONZE	Ag PLATE
3	BREAK TERMINAL	BRASS	Ag PLATE
4	HOUSING	PBT	BLACK
5	CTR PIN	BRASS	Ag PLATE



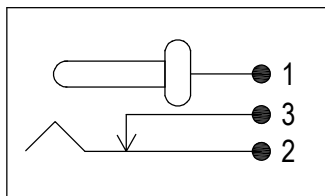
DO NOT SCALE

RoHS
COMPLIANT

TOLERANCE
 NO DEC. PLACE ± 0.3
 1 DEC. PLACE ± 0.3
 2 DEC. PLACE ± 0.3
 HOLE Ø ± 0.1
 ANGLES ± 3°
 UNLESS OTHERWISE STATED

DO NOT SCALE

SCHEMATIC



SPECIFICATION

Current Rating: 12V DC 5A max
 Contact Resistance: 30mΩ max
 Insulation Resistance: 100MΩ min at 500V DC
 Dielectric Withstand Voltage: 500V AC for 1 minute

Cliff Electronic Components Ltd.

76 Holmethorpe Avenue, Holmethorpe Industrial Estate,
 Redhill, Surrey, RH12 2PF, England, UK
 Tel: 01737-771375 Fax: 01737-766012 Website: www.cliffuk.co.uk

DIMENSIONS IN MILLIMETERS UNLESS OTHERWISE STATED. WORK TO DIMENSIONS. REMOVE ALL BURRS. IF IN DOUBT ASK.

3rd ANGLE PROJECTION:

MATERIAL: SEE TABLE

FINISH: SEE TABLE

DRAWN: C.A.M.J.

APPROVED: R.W.T.

TITLE: DC POWER SOCKET DC12A (Ø2.1mm)

DRWG. No. **FC681485**

FORM: A4DRWGH